



**FISHERIES STATISTICAL REPORT
OF
BANGLADESH**

2012-13



**Department of Fisheries, Bangladesh
Ministry of Fisheries and Livestock**

**Fisheries Statistical Report of Bangladesh
(July 2012 - June 2013)**

Volume: 30

Published: April 2014

Published by: Fisheries Resources Survey System (FRSS),
Department of Fisheries, Bangladesh

Cover design: FRSS and ICT Section of DoF

Printed by: BG Press

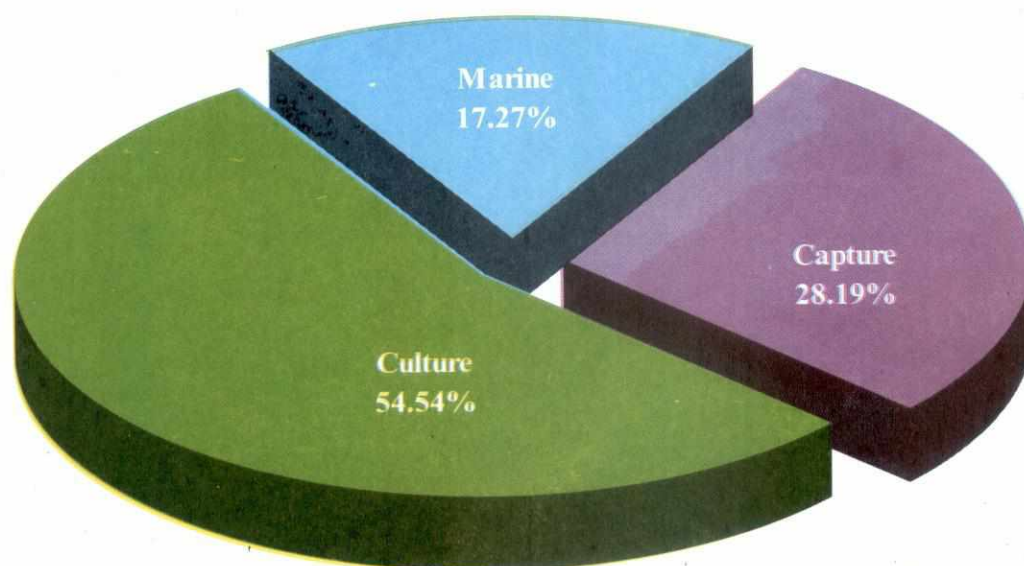
Any individual or institution can use the information for referral use of publication with acknowledgement. The Report can be collected from Matshya Bhaban, Ramna, Dhaka free of cost. Website: <http://www.fisheries.gov.bd>

Citation: FRSS, 2014. Fisheries Statistical Report of Bangladesh. Fisheries Resources Survey System (FRSS), Department of Fisheries, Bangladesh, Volume 30: 52 p.

FISHERIES STATISTICAL REPORT OF BANGLADESH

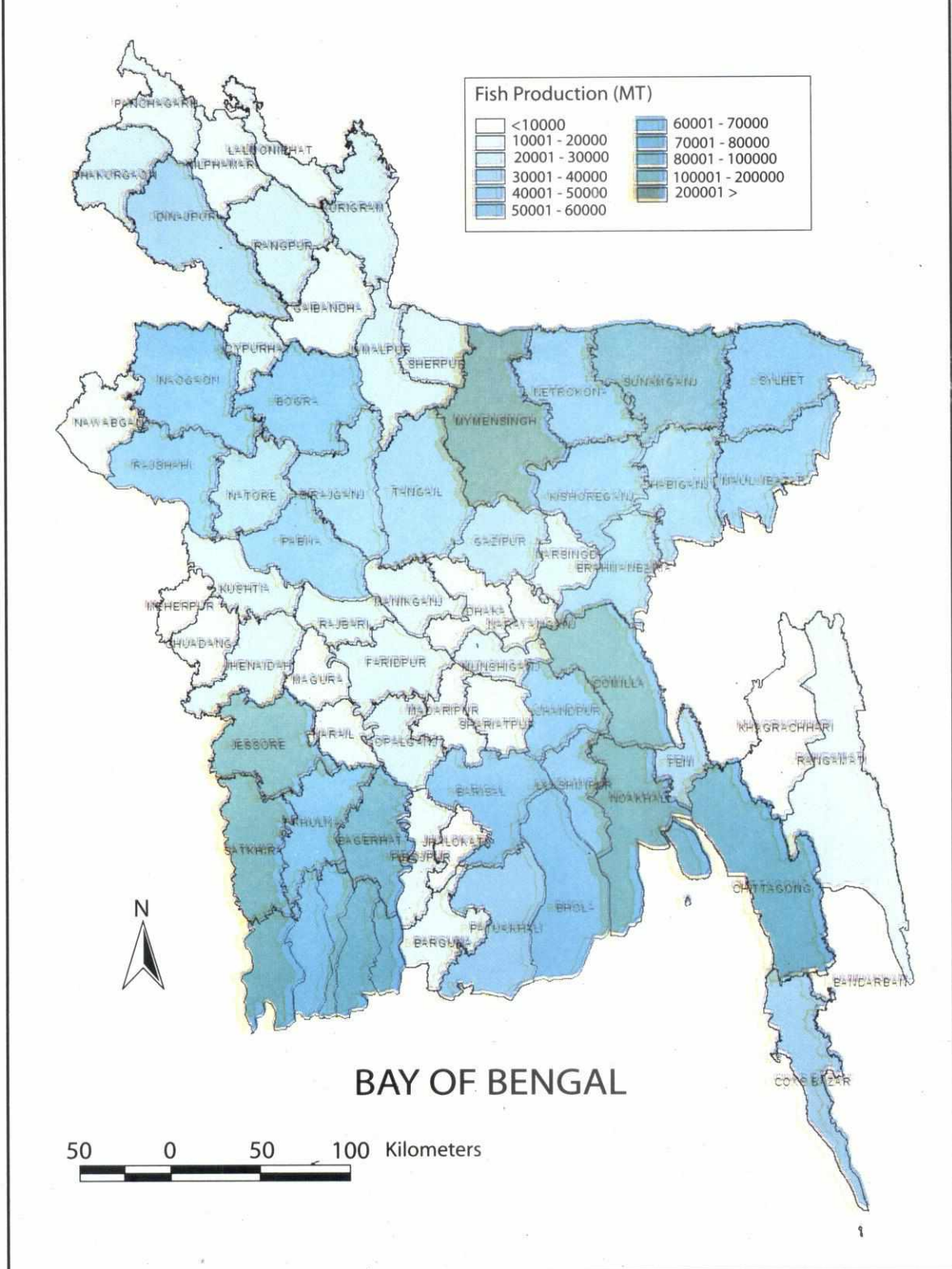
2012-13

FISH PRODUCTION



Fisheries Resources Survey System
Department of Fisheries, Bangladesh
Ministry of Fisheries and Livestock

District wise Total Fish Production in Inland Water of Bangladesh, 2012-13



PREFACE

Fisheries Statistical Report of Bangladesh is designed to provide statistical information of diversified fisheries resources and their contribution in fisheries production in Bangladesh for the fiscal year 2012-13. Considering the importance we have tried to furnish the accurate information on different areas of fisheries production in Bangladesh. The book is aimed to work as a source of information for the decision makers, planners and development partners who are intended for the advancement of fisheries sector in Bangladesh. It is also expected that the report might offer useful information to students, researchers, non-government organizations, private entrepreneurs and related government departments.

This book is a unique yearly publication of Department of Fisheries (DoF), Bangladesh since 1983. This book is 30th edition containing updated fisheries statistical information. The data accumulated in this publication has been collected in various ways, such as field survey, fish landing station records, data from DoF field offices, reports of different projects of DoF and statistics of other concerned departments. The collected information has been presented in the simplest way in this report after necessary analysis and scrutiny. The valuable feedback from other concerned agencies and persons has also been accounted during the process of data.

With respect to the previous collection of the book, this edition contains several improvements. The information of the publication has been presented in the form of table and figure, which is easily understandable to general readers. The production of fish and shellfish from different water bodies has been presented on account of country, division and district basis. The comparison of production from various resources has also been added.

Different related organizations have enriched the publication by providing valuable resource based fisheries production information. It gives me pleasure in expressing my heartfelt gratitude to them for their valued contributions. I would also like to convey my thanks to my colleagues of who have rendered any valued suggestion for improvement of the book will also be appreciated tireless efforts to make this publication attractive and useful.



(Syed Arif Azad)
Director General (Addl. Charge)
Department of Fisheries
Bangladesh

ACKNOWLEDGEMENTS

It is a regular publication of the Department of Fisheries Bangladesh and this one is the 30th annual publication. This book contains detailed yearly fisheries production information of Bangladesh, which would be useful for national, regional and global fisheries development planning. The Fisheries Resource Survey System (FRSS) wing received co-operation and assistance in various ways from relevant stakeholders during the preparation of this publication. The wing is grateful to all of them although it is not possible to convey gratitude to everyone by name.

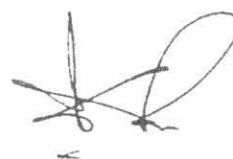
I take the opportunity to offer my heartfelt acknowledgement, deepest sense of gratitude and profound regards to respected Director General, Department of Fisheries (DoF) for his scholastic guidance, sympathetic supervision, valuable advice and constructive criticism in all phases of the data collection and the preparation of this report.

It gives me great pleasure to express my sincere gratitude and deepest sense of appreciation to my colleagues of Fisheries Resource Survey System for their untiring efforts, cordial assistance and appreciable information throughout the data collection process and during formulation of this publication.

I would like to extend my sincere and deep gratefulness to Bangladesh Fisheries Development Corporation (BFDC) and Forest Department (FD) for providing necessary data on kaptai Lake and Sundarbans respectively for this publication.

I would also like to express my cordial thanks and gratitude to all the members of the Editorial Committee headquarter and field level colleagues of our Department for their assistance and co-operation during the preparation of the report.

Any suggestion written or oral, for any improvement of this book will be highly solicited.



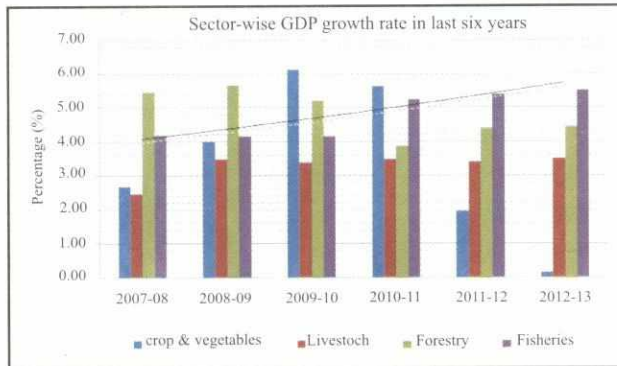
(Sk. Mustafizur Rahman)
Principal Scientific Officer (C.C.)
Department of Fisheries, Bangladesh
Tel. 9561355
e-mail: sumonazma@yahoo.com

Contents

		Page
	Fisheries Sector of Bangladesh: Development Potentials and Challenges	i-iv
Table		
1	Sector-wise Annual Fish Production in Inland and Marine Fisheries	1
2	Species/Group-wise Annual Fish Production in Inland and Marine Fisheries	2
	Inland Fisheries	
3	Species-wise Annual Fish Production in Inland Water	3
4	District-wise Annual Fish Production in Inland Water	4-5
	River	
5	District-wise Annual Fish Catch of All River	6-7
6	Species/Group-wise Annual Fish Catch of All River	8
7	District-wise Species Composition of Annual Fish Catch of Principal River	10-11
8	District-wise Species Composition of Annual Fish Catch of Other River	12-13
9	District-wise Species Composition of Annual Fish Catch of All River	
	Sundarbans	
10	Annual Fish Production of Sundarbans Fisheries	14
	Beel	
11	Annual Fish Production of Beel	15-16
12	Species Composition of Annual Fish Production of Beel	17
	Kaptai Lake	
13	Annual Fish Production of Kaptai Lake	18
	Flood Plain	
14	Annual Fish Catch in Flood Plain	19-20
15	Species Composition of Annual Fish Catch of Flood Plain	21
	Pond	
16	Annual Fish Production of Pond	22-25
17	Culture-wise Species Composition of Fish Production of Pond	26
18	District-wise Species Composition of Fish Production of Pond	27-34
	Seasonal cultured water body	
19	Annual Fish Production of Seasonal cultured water body	25-36
20	Species Composition of Fish Production of Seasonal cultured water body	37
	Baor	
21	Annual Fish Production of Baor	38
22	Species Composition of Fish Production of Baor	38
	Shrimp/Prawn Farm	
23	Annual Production of Shrimp/Prawn Farm	39-40
24	Species Composition of Shrimp/Prawn Farm Production	41
25	Year-wise Area of Shrimp/Prawn Farm from 2003-04 to 2012-13	41
	Hilsa	
26	Annual Catch of Hilsa in Inland and Marine Fisheries	42-43
	Marine Fisheries	
27	Annual Catch of Marine Fisheries	44
28	Species-wise Catch of Marine Fisheries	45
	Hatchling/Spawn Production	
29	Annual Carp Hatchling Production for 2013	46
30	Annual PL (Post Larva) Production for 2013	46
31	Hatchling production of Govt. Hatchery for 2013	47
32	Hatchling production of Private Hatchery for 2013	47
33	Annual Carp Spawn/Fertilized Egg Collected from Natural Source for 2013	48
34	Year-wise Annual Export of Fish and Fish Product	49
35	Sector-wise Annual Fish Production of 30 years from 1983-84 to 2012-13	50
36	Species-wise Annual Fish Production from 2003-04 to 2012-13	51
37	Comparison of Annual Fish Production between 2011-2012 and 2012-2013	52

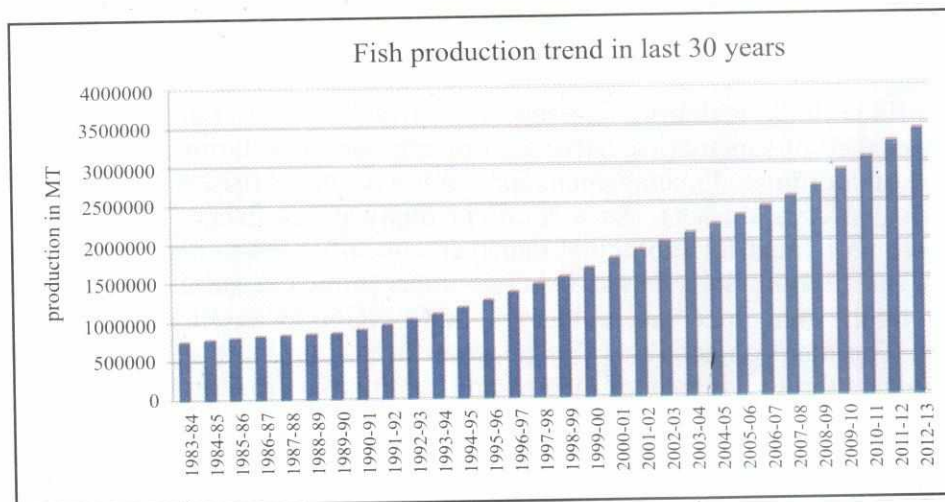
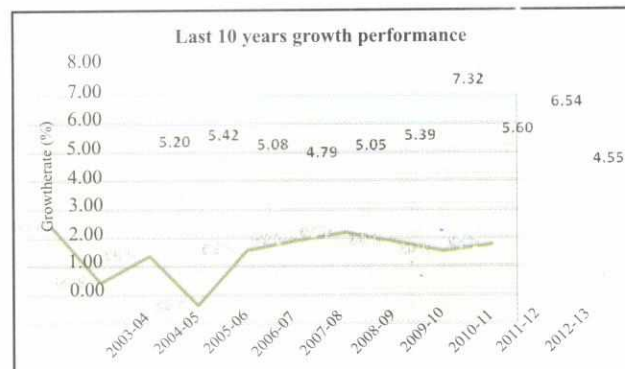
Fisheries Sector of Bangladesh: Development Potentials and Challenges

Bangladesh has achieved remarkable progress in the fisheries sector since its independence in 1971. Fisheries have been playing a very significant role and deserve potential for future development in the agrarian economy of Bangladesh. This sector contributes 4.37% to the national GDP and almost one-fourth (23.37%) to the agricultural GDP (Bangladesh Economic Review 2013). In recent years, this sector performs the highest GDP growth rate in comparison to other agricultural sectors (crop, livestock and forestry). The growth rate of this sector over the last 10 years is almost steady and encouraging, varying from 4.55 to 7.32



percent with an average 5.49 percent. Whereas last five years average growth rate of this sector is 5.88 percent. The country's export earnings from this sector is 2.01% in 2012-13. The sector's contribution to the national economy is much higher than its 4.37% share in GDP, as it provides about 60% of the animal protein intake and more than 11% of the total population of the country is directly or indirectly involved in this sector for their livelihoods.

Bangladesh is one of the world's leading fish producing countries with a total production of 34.10 lakh MT in the last fiscal 2012-13. According to available statistics, it is found that the total fish production of the country shows a consistently increasing trend during the last 30 years. Over the stipulated period the fish production is increased almost five times (7.54 lakh MT in 1983-84 to 34.10 lakh MT in 2012-13). The overall growth performance from inland aquaculture shows a credible increasing trend (1.17 lakh MT in 1983-84 to 18.60 lakh MT in 2012-13) due to dissemination of improved technology packages and



supportive/need-based extension services at farmer's level. A slight growth in the production from both inland capture and marine fisheries was also noticed during the last two and half decades with some exceptions.

The diversified fisheries resources of the country are divided into three groups, i.e., inland capture, inland culture and marine capture. Inland culture includes mainly pond/ditch, baor, shrimp/prawn farm, seasonal cultured water-body etc. covering an area of about 7.83 lakh ha and produces 18.60 lakh MT fish and shrimp in the 2012-13. Though the closed water area is only about 16.5% of the total inland water-bodies, but almost 55% of the total yield comes from inland aquaculture. This is the output of using improved technology disseminated by the Department of Fisheries (DoF). In addition vast paddy fields have enormous potential for rice-fish farming. Considering the agro-ecological context of the country, there is a wide scope of flourishing the fisheries resource potentials both at vertical and horizontal dimensions. Realizing the sector potentials, government/DoF along with development partners and NGOs has implementing different initiatives to maximize fish production in a sustainable manner.

Bangladesh is blessed with huge open water resources with a wide range of variations in nature. But due to mainly decline and degradation of resources, the share of inland capture fisheries has been reduced remarkably during the two and half decades. In 1985-86, the contribution of inland capture and culture fisheries to total fish production were 55.7% and 18.2%, respectively; whereas in 2012-13 inland capture fisheries contributes only 28.2% to total fish production. At present improved biological management is the first priority in the development policy that will restrict the declination of resources and enhance production.



The major current and future challenges of the sub sector include- gradual resource depletion (inland open water); deteriorating brood stock, and scarcity of good quality seeds and production inputs; increasing water-logging, blocking migratory routes of indigenous fish species, disturbing biodiversity and creating social conflicts; scarcity of good quality and virus-free shrimp post larvae (PL); salinity intrusion in estuarine rivers and obstructing the migratory routes due to increased silt deposit on the river channels; stock assessment of marine fishery resources; fishers access to public water bodies; alternative livelihoods support to fishers during banned fishing seasons and sanctuary maintenance; etc.

To address the current challenges, several socio-eco-friendly programs have been implemented to increase the productivity of inland open waters in the recent past years. These programs includes mainly- community based fisheries management, establishment of beel nurseries, stocking of fingerlings including endangered species, restoration of habitats, establishment and maintenance of sanctuaries, expansion of cage and pen farming in feasible water areas, introduction of coordinated management approach, issuing of fishers identity card and enforcement of fish conservation acts. As a result in many cases fishers' rights were established and they were motivated for biological management rather than only catching of fish. With the continuation of community based fisheries interventions, a strong partnership has been developed among the concerned stakeholders, i.e. GO, NGO, local elites and fishers, at implementation level. The main objective of this program is to improve the livelihood of fishers and other stakeholders through increased income and supply of animal protein.

To conserve the aquatic biodiversity, specially fish and other aquatic species diversity in open water, a set of technical interventions like establishment of fish sanctuaries, fish habitat restoration etc. have been undertaken during the recent past years. Establishment of aquatic

sanctuary is one of the effective tools for conserving fish stock, protecting biodiversity and increasing fish production. Due to establishment of fish sanctuaries (more than 500 throughout the country), a substantial increase in fish production as well as abundance of endangered species was found in those water bodies, which ultimately enhanced the aquatic bio-diversity. Besides, for the conservation and development of hilsa fishery five sanctuaries were established in the selected river system. On the other hand, to ensure fish migration during the breeding period excavation and re-excavation of different connecting canals of rivers, dead rivers and beels were performed during the recent years.

Hilsa (Ilish) is the national fish of Bangladesh. More than 10% of the country's total fish production comes from hilsa. To achieve the increased target of hilsa production, the government has been implementing a unique coordinated management program to protect jatka and brood hilsa. The objective of this program is to aware all stakeholders regarding the importance of hilsa fishery in our national economy. A comprehensive program has also been executed for the protection of the renewable natural resources ensuring the participation of all stakeholders including local public representatives, DoF, local administration, Coast Guard, Bangladesh Navy, fishers and mass people residing the hilsa rich river system. Jatka or hilsa fishers were provided with food-grains to live with and inputs to start alternative income generating activities. As a result, hilsa production increased from 1.99 lakh MT in 2003-2004 (starting of the on-going program) to 3.51 lakh MT in 2012-13.



Shrimp is one of the major export items in Bangladesh. To fulfill the extended export demand of shrimp and shrimp products, shrimp culture has been promoted with the increase of shrimp farm area from 1.41 lakh ha in 2002-03 to 2.75 lakh ha in 2012-13, which results in the

concomitant increase of shrimp farm production from 0.67 lakh MT in 2002-03 to 1.34 lakh MT in 2012-13. Total shrimp and prawn production including capture has been increased from 1.60 lakh MT in 2002-03 to 2.32 lakh MT in 2012-13. Different programs and development projects are also being implemented for the increased production and promotion of shrimp aquaculture.



Bangladesh exports frozen shrimp and other fish and fisheries products to a number of developed countries by properly addressing international food safety regulations throughout the supply chain. The present government has maintained good quality in all stages of fish and shrimp production, processing and export. In 2012-13 Bangladesh earned Tk. 43126 million by exporting almost 85 thousand MT of fish and fisheries products. The present government emphasizes on the hygienic and safe fish supply in the domestic market of the country as well.

DoF has strong monitoring on the food supply chain to ensure food safety of the consumers. At the same time DoF has undertaken awareness program for the fish whole sellers and retailers throughout the country to improve their knowledge and skill in hygienic and safe food supply.

Bangladesh possesses vast marine water resources. Despite the abundance of marine waters, only about 17.3% of country's total fish production is contributed by the marine sector. The present democratic government sets utmost priority regarding the protection, conservation and biodiversity of marine and coastal resources. As a result, the Saint Martin Island and the Sundarbans, the world famous mangrove forest, have been declared as sanctuaries to develop and protect the fisheries resources as well as biodiversity of that area. The government also has declared a marine reserve (covering 698 sq. km) in the Bay of Bengal to protect and preserve the breeding grounds of marine flora and fauna.

Human resource development is mandatory for DoF to build up administrative, management and technological capacity in fisheries sector. For this purpose regular training programs are being conducted from both revenue and development budget to develop skill of concerned personnel, which includes DoF officials, fishers, fish farmers, entrepreneurs, unemployed youths, distress women, landless and marginal farmers etc. For the sustainable development of fisheries sector, government has already approved the National Fisheries Strategy (NFS) which is developed under the guidance of National Fisheries Policy 1998 (NFP). This strategy comprises 8 (eight) building-block sub-strategies and action plans to cover the different field of fisheries sector. On the basis of action plan/work plan formulated by DoF, different programs and projects are going-on to achieve the target of the sub-strategy.

Bangladesh fisheries has ample scope of development to strengthen the national economy. Concerned government departments, development partners, researchers and non-government organizations can play important role in the wide-ranging advancement of the fisheries sector. For the overall development and management of fisheries sector, DoF formulates and implements development projects under the revenue and development budget toward the sustainable utilization of fisheries resources to ensure food security. For the better planning accurate fisheries statistical information is prerequisite. The yearbook is published with the objective of providing necessary and precise fisheries production information facilitating resource based fisheries planning by the related organizations.

**Table 1. Sector-wise Annual Fish Production in Inland and Marine Fisheries
2012-13**

Sector of Fisheries	Water Area (Hectare)	Total Production (Metric Ton)	%	Kg/Hectare
A. Inland Fisheries				
(i) Inland Open Water (Capture)¹				
1. River and Estuary	853863	147264		172
2. Sundarbans ²	177700	15945		90
3. Beel	114161	87902		770
4. Kaptai Lake ³	68800	9017		131
5. Floodplain	2702304	701330		260
Capture Total	3916828	961458	28.19%	
(ii) Inland Closed Water (Culture)				
6. Pond	371309	1446594		3896
7. Seasonal cultured water body ⁴	130488	200833		1539
8. Baor	5488	6146		1120
9. Shrimp/Prawn Farm	275274	206235		749
Culture Total	782559	1859808	54.54%	
Inland Fisheries Total	4699387	2821266	82.73%	
B. Marine Fisheries⁵				
10. Industrial (Trawl)		73030		
11. Artisanal		515958		
Marine Fisheries Total		588988	17.27%	
COUNTRY TOTAL		3410254	100%	

- Note:*
- Catch of River, Beel and Baor is estimated by catch assessment survey on the basis of Frame Survey and area from SPARRSO (Space Research and Remote Sensing Organization) Report, 1983.*
 - Catch data of Sundarbans are supplied by Forest Department. Area of Sundarbans on the basis of Integrated Resource Development of Sundarbans Reserved Forest, 1994.*
 - Catch data of Kaptai Lake are supplied by Bangladesh Fisheries Development Corporation (BFDC).*
 - Seasonal cultured water body means Paddy field, Flood plain, Boropit etc. which are under in fish culture and 130488 hectare Floodplain area is converted into Seasonal cultured water body for modern aqua-culture system.*
 - Catch data of Marine Fisheries are Supplied by Marine Wing, Department of Fisheries.*

**Table 2. Species/Group-wise Annual Fish Production in Inland and Marine Fisheries
2012-13**

[Unit: Metric Ton]

Species/Group	Inland Fisheries	Marine Fisheries	Total	%	
Major Carp	729362		729362	21.39	
Other Carp	54131		54131	1.59	
Exotic Carp	402858		402858	11.81	
Cat Fish	360745		360745	10.58	
Snake Head	53370		53370	1.56	
Live Fish	102670		102670	3.01	
Other Inland fish	834208		834208	24.46	
Hilsa/Illish (<i>Tenualosa ilisha</i>)	98648	252575	351223	10.30	
Shrimp/Prawn	185274	46568	231842	6.80	
Sardine (<i>Sardinella fimbriata</i>)		29636	29636	0.87	
Bombay Duck (<i>Harpondon nehereus</i>)		71745	71745	2.10	
Indian Salmon (<i>Polydactylus indicus</i>)		2445	2445	0.07	
Pomfret (<i>Rup/ Hail/ Foli Chanda</i>)		29693	29693	0.87	
Jew Fish (<i>Poa, Lambu, Kaladatina</i> etc.)		30600	30600	0.90	
Sea Cat Fish (<i>Tachysurus spp.</i>)		8594	8594	0.25	
Shark/ Skate / Ray		5017	5017	0.15	
Other Marine Fish		112115	112115	3.29	
TOTAL	Metric Ton	2821266	588988	3410254	100.00
	%	82.73%	17.27%	100%	

- Note:**
1. Major Carp - Rui, Catla, Mrigal
 2. Other Carp - Kalibaus, Bata, Ghania
 3. Exotic Carp - Silver Carp, Grass Carp, Common Carp, Mirror Carp, Big Head Carp, Black Carp
 4. Cat Fish - Boal, Air, Pangas, Silon, Rita
 5. Snake Head - Shol, Gazar, Taki
 6. Live Fish - Koi, Singhi, Magur
 7. Prawn - Galda and Other Inland Chingri
 8. Shrimp - Bagda and Other Coastal/ Marine Chingri
 9. Other Fish (Inland and Marine) - Includes all other fishes except those mentioned above.

**Table 3. Species-wise Annual Fish Production in Inland Water
2012-13**

[Unit: Metric Ton]

Species	River	Sundar bans	Beel	Kapta Lake	Flood Plain	Pond	Seasonal cultured water body	Baor	Shrimp/ Prawn Farm	Total	%
Rui	687	0	10258	57	18766	227095	38185	1162	11718	307928	<i>10.91</i>
Catla	412	0	8894	98	11246	164916	35059	628	5278	226531	<i>8.03</i>
Mrigal	275	0	9471	59	7521	142622	31897	771	2287	194903	<i>6.91</i>
Kalibaus	471	0	1660	125	1195	13494	1901	6	656	19508	<i>0.69</i>
Bata	94	0	0	144	211	21824	1041	0	3254	26568	<i>0.94</i>
Gonia	376	0	887	4	914	5874	0	0	0	8055	<i>0.29</i>
Silver carp	0	0	5575	10	773	181342	51728	894	7539	247861	<i>8.79</i>
Grass carp	0	0	1039	14	1617	34813	1701	230	60	39474	<i>1.40</i>
Mirror/Common carp	0	0	2009	14	13635	71354	13347	457	5541	106357	<i>3.77</i>
Other Exotic carp	0	0	775	7	0	8232	0	152	0	9166	<i>0.32</i>
Pangas	151	0	679	0	7450	278752	0	0	0	287032	<i>10.17</i>
Boal/Air	1360	0	4139	432	67333	351	0	98	0	73713	<i>2.61</i>
Shol/Gazar/Taki	311	0	4451	168	46810	719	600	311	0	53370	<i>1.89</i>
Koi	31	0	1860	1	4850	38739	80	20	0	45581	<i>1.62</i>
Shingi/Magur	281	0	1948	39	43788	10595	360	78	0	57089	<i>2.02</i>
Tilapia/ Nilotica	0	0	0	169	0	203876	5643	131	18631	228450	<i>8.10</i>
Sarpunti/Thai punti	1125	0	1801	15	13354	30750	9365	22	4108	60540	<i>2.15</i>
Other Inland Fish	36388	15229	27781	7516	429044	7688	7365	862	13345	545218	<i>19.33</i>
Hilsha	98520	128	0	0	0	0	0	0	0	98648	<i>3.50</i>
Big Shrimp/ Prawn	2512	71	548	0	1195	1494	0	14	122893	128727	<i>4.56</i>
Small Shrimp/ Prawn	4270	517	4127	145	31628	2064	2561	310	10925	56547	<i>2.00</i>
TOTAL	147264	15945	87902	9017	701330	1446594	200833	6146	206235	2821266	100
%	5.22	0.56	3.12	0.32	24.86	51.27	7.12	0.22	7.31	100.00	

- Note-*
1. Other Exotic Carp : *Big Head Carp, Black Carp etc.*
 2. Other Inland Fish : *Punti, Chapila, Tengra, Papda, Baim, Mola etc.*
 3. Big Shrimp/Prawn: *Galda, Bagda, Harina. Chaka.*
 4. Small Shrimp/Prawn: *Other small Chingri*

**Table 4. District-wise Annual Fish Production in Inland Water
2012-13**

(Unit: Metric Ton)

District	River	Sundar bans	Beel	Kaptai Lake	Flood Plain	Pond	Seasonal cultured water body	Baor	Shrimp/Prawn Farm	Total
Dhaka	422		403		4768	7746	2876	0	0.80	16215.80
Faridpur	1050		361		10272	11666	1978	332	0.00	25659.00
Gazipur	128		1052		15423	17319	4785	0	2.95	38709.95
Gopalganj	139		543		10236	10069	814	183	1047.02	23031.02
Jamalpur	532		1797		4496	12253	3961	0	0.00	23039.00
Kishorganj	1269		6439		25657	17019	4792	0	0.00	55176.00
Madaripur	709		207		7191	7990	8	165	96.70	16366.70
Manikganj	915		379		9589	7661	1625	0	2.08	20171.08
Munshiganj	670		35		16711	5873	916	0	3.15	24208.15
Mymensingh	722		6933		18802	270437	5669	0	0.00	302563.00
Narayanganj	961		147		8237	6509	2775	0	2.83	18631.83
Narsingdi	1516		474		9205	12395	3084	0	0.00	26674.00
Netrakona	448		8069		17684	24215	2477	0	0.84	52893.84
Rajbari	1231		164		8178	9603	624	372	0.16	20172.16
Shariatpur	382		37		6745	10216	647	0	22.56	18049.56
Sherpur	47		2464		3734	15091	1230	0	0.00	22566.00
Tangail	644		1537		9121	27585	2154	0	13.38	41054.38
Dhaka Div.	11785	0	31041	0	186049	473647	40415	1052	1192.47	745181.47
Bagerhat	4762	13605	17		7608	13143	3848	0	56796.50	99779.50
Chuadanga	24		969		700	7071	1431	986	0.15	11181.15
Jessore	207		1276		25537	79556	29296	1697	17276.80	154845.80
Jhenaidah	52		586		6815	16280	3450	595	1.05	27779.05
Khulna	330	1299	112		6725	12308	2462	159	40107.07	63502.07
Kushtia	229		209		4148	14164	781	511	0.00	20042.00
Magura	298		207		3241	7118	40	502	13.96	11419.96
Meherpur	31		198		1614	4351	287	335	0.00	6816.00
Narail	262		232		3137	3147	2380	227	1711.00	11096.00
Satkhira	330	1041	13		3001	30656	8495	82	59143.27	102761.27
Khulna Div.	6525	15945	3819	0	62526	187794	52470	5094	175049.8	509222.80
Barguna	1576		0		4199	5577	1057		82.83	12491.83
Barisal	23599		16		6445	27890	8920		756.50	67626.50
Bhola	29859		1		5619	32304	315		18.71	68116.71
Jhalokathi	687		4		3986	3159	1118		9.12	8963.12
Patuakhali	4285		0		10337	16883	4230		5030.25	40765.25
Pirojpur	2593		7		3917	9127	1214		1678.91	18536.91
Barisal Div.	62599	0	28	0	34503	94940	16854	0	7576.32	216500.32

(Unit: Metric Ton)

District	River	Sundar bans	Beel	Kaptai Lake	Flood Plain	Pond	Seasonal cultured water body	Baor	Shrimp/ Prawn Farm	Total
Dinajpur	123		317		6015	28505	3076		0.20	38036.20
Gaibandha	563		332		5181	10045	976		0.73	17097.73
Kurigram	494		628		10655	10232	1460		0.00	23469.00
Lalmonirhat	69		370		2201	7184	533		0.72	10357.72
Nilphamari	65		288		3995	8073	145		0.28	12566.28
Panchagarh	6		35		2156	8234	107		3.92	10541.92
Rangpur	53		1590		5865	11990	2100		0.19	21598.19
Thakurgaon	6		155		2157	16237	26		3.16	18584.16
Rangpur Div.	1379	0	3715	0	38225.00	100500	8423	0	9.20	152251.20
Bogra	258		1973		15425	45163	1280		0.00	64099.00
C.Nawabganj	858		2666		3679	6583	858		0.00	14644.00
Joypurhat	28		104		5409	16091	53		1.81	21686.81
Naogaon	241		3710		12967	43769	3395		5.62	64087.62
Natore	252		709		9722	25160	446		0.00	36289.00
Pabna	2705		1251		12555	33428	8189		1.15	58129.15
Rajshahi	841		3235		13471	43285	4813		0.32	65645.32
Sirajganj	574		611		21390	14669	4233		1.02	41478.02
Rajshahi Div.	5757	0	14259	0	94618	228148	23267	0	9.92	366058.92
Bandarban	44		0		144	1148	0		3.87	1339.87
Brahmanbaria	978		434		15780	23989	2294		0.00	43475.00
Chandpur	8245		116		20808	32304	1514		70.25	63057.25
Chittagong	12549		21		30367	44132	459		2460.86	89988.86
Comilla	639		156		13706	110532	29626		40.71	154699.71
Cox's Bazar	4291		0		2991	4881	22		19530.16	31715.16
Feni	891		0		18473	15083	5020		25.57	39492.57
Khagrachari	87		27		0	2542	39		0.00	2695.00
Lakshmipur	10082		0		6223	37049	576		45.00	53975.00
Noakhali	19308		1		33920	42493	6545		218.75	102485.75
Rangamati	77		73	9017	15	1743	11		0.00	10936.00
Ctg. Div.	57191	0	828	9017	142427	315896	46106	0	22395.17	593860.17
Habiganj	177		2766		28164	12582	90		0.00	43779.00
Moulvibazar	701		3454		36621	11775	680		1.00	53232.00
Sunamganj	538		23737		53249	6871	679		0.44	85074.44
Sylhet	612		4255		24948	14441	11849		0.68	56105.68
Sylhet Div.	2028	0	34212	0	142982	45669	13298	0	2.12	238191.12
Total	147264	15945	87902	9017	701330	1446594	200833	6146	206235	2821266.00
%	5.22	0.57	3.12	0.32	24.86	51.27	7.12	0.22	7.31	100.00

**Table-5. District-wise Annual Fish Catch of All River
2012-13**

[Unit : Metric Ton]

District	Principal River						Principal River Total (A)	Other River Total (B)	Grand Total (A+B)
	Lower Meghna	Upper Meghna	Lower Padma	Upper Padma	Jamuna	Brahma Putra			
Dhaka			324				324	98	422
Faridpur			889				889	161	1050
Gazipur							0	128	128
Gopalganj							0	139	139
Jamalpur					81	171	252	280	532
Kishoreganj		980					980	289	1269
Madaripur			674				674	35	709
Manikganj			809		36		845	70	915
Munshiganj		277	306				583	87	670
Mymensingh							0	722	722
Narayanganj		677					677	284	961
Narshingdi		1435					1435	81	1516
Netrakona							0	448	448
Rajbari			545	447			992	239	1231
Shariatpur	120		118				238	144	382
Sherpur							0	47	47
Tangail					565		565	79	644
Dhaka Div.	120	3369	3665	447	682	171	8454	3331	11785
Bagerhat							0	4762	4762
Chuadanga							0	24	24
Jessore							0	207	207
Jhenaidah							0	52	52
Khulna							0	330	330
Kushtia				177			177	52	229
Magura							0	298	298
Meherpur							0	31	31
Narail							0	262	262
Satkhira							0	330	330
Khulna Div.	0	0	0	177	0	0	177	6348	6525
Barguna							0	1576	1576
Barisal	23051						23051	548	23599
Bhola	29317						29317	542	29859
Jhalokathi							0	687	687
Patuakhali							0	4285	4285
Pirojpur							0	2593	2593
Barisal Div.	52368	0	0	0	0	0	52368	10231	62599

Cont....

[Unit : Metric Ton]

District	Principal River						Principal River Total (A)	Other River Total (B)	Grand Total (A+B)
	Lower Meghna	Upper Meghna	Lower Padma	Upper Padma	Jamuna	Brahma Putra			
Dinajpur							0	123	123
Gaibandha					190	75	265	298	563
Kurigram						207	207	287	494
Lalmonirhat							0	69	69
Nilphamari							0	65	65
Panchagarh							0	6	6
Rangpur							0	53	53
Thakurgaon							0	6	6
Rangpur Div.	0	0	0	0	190	282	472	907	1379
Bogra					138		138	120	258
C.Nawabganj				779			779	79	858
Joypurhat							0	28	28
Naogaon							0	241	241
Natore				178			178	74	252
Pabna				1106	779		1885	820	2705
Rajshahi				647			647	194	841
Sirajganj					249		249	325	574
Rajshahi Div.	0	0	0	2710	1166	0	3876	1881	5757
Bandarban							0	44	44
Brahmanbaria		639					639	339	978
Chandpur	7737						7737	508	8245
Chittagong							0	12549	12549
Comilla		157					157	482	639
Cox's Bazar							0	4291	4291
Feni							0	891	891
Khagrachari							0	87	87
Lakshmipur	9864						9864	218	10082
Noakhali	19170						19170	138	19308
Rangamati							0	77	77
Chtg. Div.	36771	796	0	0	0	0	37567	19624	57191
Habiganj		52					52	125	177
Moulvibazar							0	701	701
Sunamganj							0	538	538
Sylhet							0	612	612
Sylhet Div.	0	52	0	0	0	0	52	1976	2028
Total	89259	4217	3665	3334	2038	453	102966	44298	147264
%	60.61	2.86	2.49	2.27	1.38	0.31	69.92	30.08	100.00

**Table 6. Species/Group-wise Annual Fish Catch of All River
2012-13**

(A) Catch in Weight

[Unit : Metric Ton]

Name of River	Major Carp	Other Carp	Cat Fish	Snake Head	Live Fish	Hilsa	Big Prawn	Small Prawn	Other Fish	Total
Lower Meghna	38	340	134	0	0	73316	118	389	14924	89259
Upper Meghna	156	52	67	0	0	414	39	97	3392	4217
Lower Padma	44	15	55	0	0	1646	8	80	1817	3665
Upper Padma	121	12	121	0	0	363	7	114	2596	3334
Jamuna	39	45	69	0	0	30	16	119	1720	2038
Brahmaputra	18	4	42	0	0	7	4	19	359	453
Principal River Total (A)	416	468	488	0	0	75776	192	818	24808	102966
Other River Total (B)	958	473	1023	311	312	22744	2320	3452	12705	44298
Grand Total (A+B)	1374	941	1511	311	312	98520	2512	4270	37513	147264

(B) Catch in Percentage

Name of River	Major Carp	Other Carp	Cat Fish	Snake Head	Live Fish	Hilsa	Big Prawn	Small Prawn	Other Fish	Total
	%	%	%	%	%	%	%	%	%	%
Lower Meghna	0.026	0.231	0.091	0.000	0.000	49.785	0.080	0.264	10.134	60.61
Upper Meghna	0.106	0.035	0.045	0.000	0.000	0.281	0.026	0.066	2.303	2.86
Lower Padma	0.030	0.010	0.037	0.000	0.000	1.118	0.005	0.054	1.234	2.49
Upper Padma	0.082	0.008	0.082	0.000	0.000	0.246	0.005	0.077	1.763	2.27
Jamuna	0.026	0.031	0.047	0.000	0.000	0.020	0.011	0.081	1.168	1.38
Brahmaputra	0.012	0.003	0.029	0.000	0.000	0.005	0.003	0.013	0.244	0.31
Principal River Total (A)	0.282	0.318	0.331	0.000	0.000	51.456	0.130	0.555	16.846	69.92
Other River Total (B)	0.651	0.321	0.695	0.211	0.212	15.444	1.575	2.344	8.627	30.08
Grand Total (A+B)	0.93	0.64	1.03	0.21	0.21	66.90	1.71	2.90	25.47	100.00

**Table 7. District-wise Species Composition of Annual Fish Catch of Principal River
2012-13**

[Unit : Metric Ton]

River	District	Major Carp	Other Carp	Cat Fish	Snake Head	Live Fish	Hilsa	Big Prawn	Small Prawn	Other Fish	Total
Lower Meghna	Barisal	4	0	81			21431	55	105	1375	23051
	Bhola	13	0	35			27816	34	105	1314	29317
	Chandpur	7	2	13			3033	7	84	4591	7737
	Lakshmipur	5	216	2			3018	15	66	6542	9864
	Noakhali	7	122	3			17907	7	28	1096	19170
	Shariatpur	2	0	0			111	0	1	6	120
	Sub-Total	38	340	134			73316	118	389	14924	89259
Upper Meghna	Brahmanbaria	82	12	31			158	4	15	337	639
	Comilla	23	12	17			0	12	35	58	157
	Habiganj	1	0	3			6	1	4	37	52
	Kishoreganj	21	26	7			66	15	18	827	980
	Munshiganj	2	1	1			24	2	11	236	277
	Narayanganj	3	0	2			112	1	2	557	677
	Narshingdi	24	1	6			48	4	12	1340	1435
Sub-Total	156	52	67			414	39	97	3392	4217	
Lower Padma	Dhaka	11	2	9			70	1	12	219	324
	Faridpur	14	3	7			231	1	8	625	889
	Madaripur	5	2	7			45	1	18	596	674
	Manikganj	4	3	1			721	1	13	66	809
	Munshiganj	2	2	22			45	1	9	225	306
	Rajbari	7	2	7			460	2	13	54	545
	Shariatpur	1	1	2			74	1	7	32	118
Sub-Total	44	15	55			1646	8	80	1817	3665	
Upper Padma	C. Nawabganj	37	2	29			2	3	38	668	779
	Kushtia	4	1	18			17	1	42	94	177
	Natore	20	3	16			0	0	3	136	178
	Pabna	11	0	15			32	0	16	1032	1106
	Rajbari	9	3	6			307	1	7	114	447
	Rajshahi	40	3	37			5	2	8	552	647
	Sub-Total	121	12	121			363	7	114	2596	3334
Jamuna	Bogra	2	0	3			2	1	20	110	138
	Gaibandha	3	0	8			12	5	17	145	190
	Jamalpur	1	0	0			1	0	4	75	81
	Manikganj	1	1	0			3	1	2	28	36
	Pabna	7	0				3	1	14	754	779
	Sirajganj	4	1	4			4	1	6	229	249
	Tangail	21	43	54			5	7	56	379	565
Sub-Total	39	45	69			30	16	119	1720	2038	
Brahma putra	Gaibandha	3	1	14			0	1	4	52	75
	Jamalpur	1	0	1			0	1	6	162	171
	Kurigram	14	3	27			7	2	9	145	207
	Sub-Total	18	4	42			7	4	19	359	453
TOTAL		416	468	488	0	0	75776	192	818	24808	102966
%		0.40	0.46	0.47	0.00	0.00	73.59	0.19	0.80	24.09	100.00

**Table 8. District-wise Species Composition of Annual Fish Catch of Other River
2012-13**

[Unit : Metric Ton]

District	Major Carp	Other Carp	Cat Fish	Snake Head	Live Fish	Hilsa	Big Prawn	Small Prawn	Other Fish	Total
Dhaka	6	2	11	0	5	0	5	15	54	98
Faridpur	11	4	3	7	0	0	3	7	126	161
Gazipur	33	14	21	0	0	0	1	13	46	128
Gopalganj	16	7	5	18	13	1	2	35	42	139
Jalpaiguri	51	21	7	8	2	0	2	11	178	280
Kishoreganj	44	10	45	2	1	0	2	9	176	289
Madaripur	9	2	5	0	0	0	1	3	15	35
Manikganj	5	3	2	3	5	0	3	7	42	70
Munshiganj	5	2	35	0	0	0	7	8	30	87
Mymensingh	29	32	35	0	0	0	2	6	618	722
Narayanganj	0	0	0	0	0	0	2	12	270	284
Narsingdi	1	1	0	0	0	0	3	21	55	81
Netrakona	31	39	42	0	0	0	3	5	328	448
Rajbari	9	5	11	0	0	0	5	108	101	239
Shariatpur	7	2	2	1	0	0	2	5	125	144
Sherpur	4	1	1	0	0	0	0	1	40	47
Tangail	13	6	16	0	0	0	3	13	28	79
Dhaka Division	274	151	241	39	26	1	46	279	2274	3331
Bagerhat	4	0	3	0	0	361	1993	2160	241	4762
Chuadanga	2	0	0	2	0	0	0	5	15	24
Jessore	27	4	4	20	23	0	24	15	90	207
Jhenaidah	0	0	0	9	0	0	4	16	23	52
Khulna	0	6	47	33	12	11	33	35	153	330
Kushtia	4	0	0	0	0	0	4	13	31	52
Magura	55	0	10	2	1	0	3	45	182	298
Meherpur	0	0	4	2	1	0	2	4	18	31
Narail	23	5	3	2	1	13	41	14	160	262
Satkhira	0	0	0	5	93	0	14	115	103	330
Khulna Division	115	15	71	75	131	385	2118	2422	1016	6348
Barguna	0	0	0	0	0	807	2	9	758	1576
Barisal	7	0	10	0	0	0	5	14	512	548
Bhola	0	0	0	0	0	0	5	14	523	542
Jhalokathi	0	0	0	0	0	361	1	3	322	687
Patuakhali	0	0	0	0	0	3231	3	7	1044	4285
Pirojpur	0	0	0	0	0	1194	2	5	1392	2593
Barisal Division	7	0	10	0	0	5593	18	52	4551	10231

[Unit : Metric Ton]

District	Major Carp	Other Carp	Cat Fish	Snake Head	Live Fish	Hilsa	Big Prawn	Small Prawn	Other Fish	Total
Dinajpur	0	0	0	0	6	0	0	3	114	123
Gaibandha	53	19	61	11	0	0	4	27	123	298
Kurigram	18	2	26	8	0	0	2	8	223	287
Lalmonirhat	3	4	13	2	0	0	3	11	33	69
Nilphamari	4	0	0	0	0	0	2	19	40	65
Panchagarh	0	0	0	0	0	0	0	1	5	6
Rangpur	3	1	4	0	0	0	2	3	40	53
Thakurgaon	0	0	0	0	0	0	0	0	6	6
Rangpur Division	81	26	104	21	6	0	13	72	584	907
Bogra	3	1	7	0	0	0	1	14	94	120
C.Nawabgonj	19	6	3	0	1	0	3	15	32	79
Joypurhat	0	0	0	0	0	0	0	0	28	28
Naogaon	1	0	6	0	0	0	2	3	229	241
Natore	3	0	2	1	2	1	0	9	56	74
Pabna	0	0	26	49	0	0	2	6	737	820
Rajshahi	4	5	25	2	2	0	1	13	142	194
Sirajgonj	6	4	3	3	2	0	2	35	270	325
Rajshahi Division	36	16	72	55	7	1	11	95	1588	1881
Bandarban	3	0	0	0	4	0	0	15	22	44
Brahmanbaria	19	2	73	5	47	0	3	9	181	339
Chandpur	85	5	26	79	0	0	24	19	270	508
Chittagong	15	5	0	0	0	12439	11	37	42	12549
Comilla	131	39	75	11	7	0	35	63	121	482
Cox's Bazar	0	0	0	0	0	4228	12	23	28	4291
Feni	35	55	136	2	35	80	4	171	373	891
Khagrachari	0	0	0	0	0	0	0	0	87	87
Lakshmipur	7	14	9	8	13	0	12	37	118	218
Noakhali	6	5	2	1	10	0	9	27	78	138
Rangamati	0	0	0	0	0	0	0	0	77	77
Ctg. Division	301	125	321	106	116	16747	110	401	1397	19624
Habigonj	9	3	2	6	15	0	0	11	79	125
Moulvibazar	49	57	129	3	7	0	1	39	416	701
Sunamgonj	31	9	0	0	0	6	1	40	451	538
Sylhet	55	71	73	6	4	11	2	41	349	612
Sylhet Division	144	140	204	15	26	17	4	131	1295	1976
Total	958	473	1023	311	312	22744	2320	3452	12705	44298
%	2.16	1.07	2.31	0.70	0.70	51.35	5.24	7.79	28.68	100.00

**Table 9. District-wise Species Composition of Annual Fish Catch of All River
2012-13**

[Unit : Metric Ton]

District	Major Carp	Other Carp	Cat Fish	Snake Head	Live Fish	Hilsa	Big Prawn	Small Prawn	Other Fish	Total
Dhaka	17	4	20	0	5	70	6	27	273	422
Faridpur	25	7	10	7	0	231	4	15	751	1050
Gazipur	33	14	21	0	0	0	1	13	46	128
Gopalganj	16	7	5	18	13	1	2	35	42	139
Jamalpur	53	21	8	8	2	1	3	21	415	532
Kishorgonj	65	36	52	2	1	66	17	27	1003	1269
Madaripur	14	4	12	0	0	45	2	21	611	709
Manikgonj	10	7	3	3	5	724	5	22	136	915
Munshigonj	9	5	58	0	0	69	10	28	491	670
Mymensingh	29	32	35	0	0	0	2	6	618	722
Narayangonj	3	0	2	0	0	112	3	14	827	961
Narsingdi	25	2	6	0	0	48	7	33	1395	1516
Netrakona	31	39	42	0	0	0	3	5	328	448
Rajbari	25	10	24	0	0	767	8	128	269	1231
Shariatpur	10	3	4	1	0	185	3	13	163	382
Sherpur	4	1	1	0	0	0	0	1	40	47
Tangail	34	49	70	0	0	5	10	69	407	644
Dhaka Div.	403	241	373	39	26	2324	86	478	7815	11785
Bagerhat	4	0	3	0	0	361	1993	2160	241	4762
Chuadanga	2	0	0	2	0	0	0	5	15	24
Jessore	27	4	4	20	23	0	24	15	90	207
Jhenaidah	0	0	0	9	0	0	4	16	23	52
Khulna	0	6	47	33	12	11	33	35	153	330
Kushtia	8	1	18	0	0	17	5	55	125	229
Magura	55	0	10	2	1	0	3	45	182	298
Meherpur	0	0	4	2	1	0	2	4	18	31
Narail	23	5	3	2	1	13	41	14	160	262
Satkhira	0	0	0	5	93	0	14	115	103	330
Khulna Div.	119	16	89	75	131	402	2119	2464	1110	6525
Barguna	0	0	0	0	0	807	2	9	758	1576
Barisal	11	0	91	0	0	21431	60	119	1887	23599
Bhola	13	0	35	0	0	27816	39	119	1837	29859
Jhalokathi	0	0	0	0	0	361	1	3	322	687
Patuakhali	0	0	0	0	0	3231	3	7	1044	4285
Pirojpur	0	0	0	0	0	1194	2	5	1392	2593
Barisal Div.	24	0	126	0	0	54840	107	262	7240	62599

[Unit : Metric Ton]

District	Major Carp	Other Carp	Cat Fish	Snake Head	Live Fish	Hilsa	Big Prawn	Small Prawn	Other Fish	Total
Dinajpur	0	0	0	0	6	0	0	3	114	123
Gaibandha	59	20	83	11	0	12	10	48	320	563
Kurigram	32	5	53	8	0	7	4	17	368	494
Lalmonirhat	3	4	13	2	0	0	3	11	33	69
Nilphamari	4	0	0	0	0	0	2	19	40	65
Panchagarh	0	0	0	0	0	0	0	1	5	6
Rangpur	3	1	4	0	0	0	2	3	40	53
Thakurgaon	0	0	0	0	0	0	0	0	6	6
Rangpur Div.	101	30	153	21	6	19	21	102	926	1379
Bogra	5	1	10	0	0	2	2	34	204	258
C.Nawabgonj	56	8	32	0	1	2	6	53	700	858
Joypurhat	0	0	0	0	0	0	0	0	28	28
Naogaon	1	0	6	0	0	0	2	3	229	241
Natore	23	3	18	1	2	1	0	12	192	252
Pabna	18	0	41	49	0	35	3	36	2523	2705
Rajshahi	44	8	62	2	2	5	3	21	694	841
Sirajgonj	10	5	7	3	2	4	3	41	499	574
Rajshahi Div.	157	25	176	55	7	49	19	200	5069	5757
Bandarban	3	0	0	0	4	0	0	15	22	44
Brahmanbaria	101	14	104	5	47	158	7	24	518	978
Chandpur	92	7	39	79	0	3033	31	103	4861	8245
Chittagong	15	5	0	0	0	12439	11	37	42	12549
Comilla	154	51	92	11	7	0	47	98	179	639
Cox's Bazar	0	0	0	0	0	4228	12	23	28	4291
Feni	35	55	136	2	35	80	4	171	373	891
Khagrachari	0	0	0	0	0	0	0	0	87	87
Lakshmipur	12	230	11	8	13	3018	27	103	6660	10082
Noakhali	13	127	5	1	10	17907	16	55	1174	19308
Rangamati	0	0	0	0	0	0	0	0	77	77
Ctg. Div.	425	489	387	106	116	40863	155	629	14021	57191
Haðigonj	10	3	5	6	15	6	1	15	116	177
Moulvibazar	49	57	129	3	7	0	1	39	416	701
Sunamgonj	31	9	0	0	0	6	1	40	451	538
Sylhet	55	71	73	6	4	11	2	41	349	612
Sylhet Div.	145	140	207	15	26	23	5	135	1332	2028
Total	1374	941	1511	311	312	98520	2512	4270	37513	147264
%	0.93	0.64	1.03	0.21	0.21	66.90	1.71	2.90	25.47	100.00

Note: 1. Major Carp
2. Other Carp
3. Cat Fish
4. Snake Head
5. Live Fish
6. Big Shrimp/Prawn
8. Small Shrimp/Prawn
9. Other Fish

- Rui, Catla, Mrigal
- Kalibaus, Bata, Ghania
- Boal, Air, Pangas, Silon, Rita
- Shol, Gazar, Taki
- Koi, Singhi, Magur
- Galda, Bagda, Chaka, Horina
- Other Small Chingri
- Puntti, Sarpuntti, Chapila, Tengra, Papda, Baim, Mola etc.

**Table 10. Annual Fish Production of Sundarbans Fisheries
2012-13**

[Unit : Metric Ton]

Zone	District	Hilsa	Big Shrimp/ Prawn	Small Shrimp/ Prawn	Other Fish	Total
East Sundarbans	Bagerhat	128	65	402	13010	13605
West Sundarbans	Khulna	0	2	69	1228	1299
West Sundarbans	Satkhira	0	4	46	991	1041
Total		128	71	517	15229	15945
%		<i>0.80</i>	<i>0.45</i>	<i>3.24</i>	<i>95.51</i>	<i>100.00</i>

Source: Catch data of Sundarbanas are supplied by Forest Department.

Other Fish: Koral, Dry fish and other inland fish.

**Table 11. Annual Fish Production of Beel
2012-13**

Area in Hectare Production in Metric Ton

Sl. No.	District	Production from Natural Source		Production under Beel Nursery Program		Total Catch	
		Area	Catch	Area	Catch	Area	Catch
1	Dhaka	945	373	51	30	996	403
2	Faridpur	216	153	210	208	426	361
3	Gazipur	1370	763	350	289	1720	1052
4	Gopalganj	645	278	256	265	901	543
5	Jamalpur	3028	1226	332	571	3360	1797
6	Kishorgonj	6671	6077	166	362	6837	6439
7	Madaripur	32	11	231	196	263	207
8	Manikgonj	638	262	134	117	772	379
9	Munshigonj	19	12	31	23	50	35
10	Mymensingh	7010	6561	336	372	7346	6933
11	Narayangonj	155	108	61	39	216	147
12	Narsingdi	1129	366	35	108	1164	474
13	Netrakona	8018	7705	337	364	8355	8069
14	Rajbari	94	23	155	141	249	164
15	Shariatpur	71	25	5	12	76	37
16	Sherpur	3494	2453	14	11	3508	2464
17	Tangail	2148	1390	185	147	2333	1537
	<i>Dhaka Division</i>	<i>35683</i>	<i>27786</i>	<i>2889</i>	<i>3255</i>	<i>38572</i>	<i>31041</i>
18	Bagerhat	42	14	6	3	48	17
19	Chuadanga	636	287	525	682	1161	969
20	Jessore	2482	809	228	467	2710	1276
21	Jhenaidah	1038	456	93	130	1131	586
22	Khulna	271	112	0	0	271	112
23	Kushtia	587	209	0	0	587	209
24	Magura	278	105	54	102	332	207
25	Meherpur	449	198	0	0	449	198
26	Narail	864	232	0	0	864	232
27	Satkhira	46	13	0	0	46	13
	<i>Khulna Division</i>	<i>6693</i>	<i>2435</i>	<i>906</i>	<i>1384</i>	<i>7599</i>	<i>3819</i>
28	Barguna	0	0	0	0	0	0
29	Barisal	29	9	12	7	41	16
30	Bhola	4	1	0	0	4	1
31	Jhalokathi	14	4	0	0	14	4
32	Patuakhali	0	0	0	0	0	0
33	Pirojpur	8	3	12	4	20	7
	<i>Barisal Division</i>	<i>55</i>	<i>17</i>	<i>24</i>	<i>11</i>	<i>79</i>	<i>28</i>

Area in Hectare

Production in Metric Ton

Sl. No.	District	Production from Natural Source		Production under Beel Nursery Program		Total Catch	
		Area	Catch	Area	Catch	Area	Catch
34	Dinajpur	730	293	52	24	782	317
35	Gaibandha	819	332	0	0	819	332
36	Kurigram	1166	463	185	165	1351	628
37	Lalmonirhat	349	201	254	169	603	370
38	Nilphamari	808	288	0	0	808	288
39	Panchagarh	110	35	0	0	110	35
40	Rangpur	1857	1534	54	56	1911	1590
41	Thakurgaon	357	150	3	5	360	155
	Rangpur Division	6196	3296	548	419	6744	3715
42	Bogra	3490	1940	27	33	3517	1973
43	Chapainawabgonj	3955	1732	849	934	4804	2666
44	Joypurhat	271	94	13	10	284	104
45	Naogaon	7369	3382	286	328	7655	3710
46	Natore	1143	517	250	192	1393	709
47	Pabna	1716	708	637	543	2353	1251
48	Rajshahi	5760	3001	237	234	5997	3235
49	Sirajgonj	591	315	311	296	902	611
	Rajshahi Division	24295	11689	2610	2570	26905	14259
50	Bandarban	0	0	0	0	0	0
51	Brahmanbaria	259	186	209	248	468	434
52	Chandpur	361	116	0	0	361	116
53	Chittagong	89	21	0	0	89	21
54	Comilla	104	58	170	98	274	156
55	Cox's Bazar	0	0	0	0	0	0
56	Feni	0	0	0	0	0	0
57	Khagrachari	61	17	14	10	75	27
58	Lakshmipur	0	0	0	0	0	0
59	Noakhali	3	1	0	0	3	1
60	Rangamati	292	73	0	0	292	73
	Ctg. Division	1169	472	393	356	1562	828
61	Habigonj	2805	2583	173	183	2978	2766
62	Moulvibazar	2920	2809	572	645	3492	3454
63	Sunamgonj	20712	23239	256	498	20968	23737
64	Sylhet	4416	3511	846	744	5262	4255
	Sylhet Division	30853	32142	1847	2070	32700	34212
	Total	104944	77837	9217	10065	114161	87902

Source	Area (Ha)	Production (MT)	%	MT/Ha
Natural Source	104944	77837	88.55	0.742
Beel Nursery Program	9217	10065	11.45	1.092
Total	114161	87902	100.00	0.770

Note : Area of Beel from SPARRSO Report, 1983 and district-wise area from CEGIS Report, 2002.

**Table 12. Species Composition of Annual Fish Production of Beel
2012-13**

Sl. No.	Species	Natural Source		Beel Nursery		Total Catch	
		(MT)	%	(MT)	%	(MT)	%
1	Rui	8586	11.03	1672	16.61	10258	11.67
2	Catla	7519	9.66	1375	13.66	8894	10.12
3	Mrigal	8290	10.65	1181	11.73	9471	10.77
4	Kalibaas	1487	1.91	173	1.72	1660	1.89
5	Bata	0	0.00	0	0.00	0	0.00
6	Gonia	786	1.01	101	1.00	887	1.01
7	Silver carp	4904	6.30	671	6.67	5575	6.34
8	Grass carp	926	1.19	113	1.12	1039	1.18
9	Mirror/Common carp	1712	2.20	297	2.95	2009	2.29
10	Other Exotic carp	739	0.95	36	0.36	775	0.88
11	Pangas	607	0.78	72	0.71	679	0.77
12	Boal/Air/Guizza Air	3503	4.50	636	6.32	4139	4.71
13	Shol/Gazar/Taki	3962	5.09	489	4.86	4451	5.06
14	Koi	1658	2.13	202	2.01	1860	2.12
15	Shingi/Magur	1681	2.16	267	2.65	1948	2.22
16	Big Shrimp/Prawn	483	0.62	65	0.65	548	0.62
17	Small Shrimp/Prawn	3915	5.03	212	2.11	4127	4.70
18	Telapia/Nilotica	0	0.00	0	0.00	0	0.00
19	Sarpunti/Thai punti	1580	2.03	221	2.20	1801	2.05
20	Other Fish	25499	32.76	2282	22.67	27781	31.60
	Total	77837	100.00	10065	100.00	87902	100.00

Other Fish : Chapila, Tengra, Punti, Chital, Phali, Pabda, Baim, Mola etc.

**Table 13. Annual Fish Production of Kaptai Lake
2012-13**

Sl. No.	Species	Production (Metric Ton)	%
1	Rui (<i>Labeo rohita</i>)	57	0.63
2	Catla (<i>Catla catla</i>)	98	1.09
3	Mrigal (<i>Cirrhinus cirrhosus</i>)	59	0.65
4	Kalibaus (<i>Labeo calbasu</i>)	125	1.39
5	Bata (<i>Labeo Bata</i>)	144	1.60
6	Ghonia (<i>Labeo gonius</i>)	4	0.04
7	Silver Carp (<i>Hypophthalmichthys molitrix</i>)	10	0.11
8	Grass Carp (<i>Ctenopharyngodon idella</i>)	14	0.16
9	Common Carp (<i>Cyprinus carpio</i>)	14	0.16
10	Other Exotic Carp	7	0.08
11	Pangas (<i>Pangasius pangasius</i>)	0	0.00
12	Boal/Air/Guizza Air (<i>Wallago attu/Sperata aor/Sperata seenghala</i>)	432	4.79
13	Shol/Gazar/Taki (<i>Channa striatus/C. marulius/C. punctatus</i>)	168	1.86
14	Koi (<i>Anabas testudineus</i>)	1	0.01
15	Singi/Magur (<i>Heteropneustes fossilis/Clarias batrachus</i>)	39	0.43
16	Big Prawn	0	0.00
17	Small Prawn	145	1.61
18	Tilapia/Nilotica (<i>Oreochromis mossambicus/O. niloticus</i>)	169	1.87
19	Sarpunti (<i>Puntius sarana</i>)	15	0.17
20	Other Fish	7516	83.35
	TOTAL	9017	100.00

Source : Catch data of Kaptai Lake are supplied by Bangladesh Fisheries Development Corporation (BFDC).
Other Inland Fish : Chapila, Tengra, Puntí, Chítal, Phali, Pabda, Bacha, Kazoli, Baim, Kakchki, Mola etc.

**Table 14. Annual Fish Catch in Flood Plain
2012-13**

District	Subsistence Fisheries			Fry Released Program			Haor		Total Production (MT) (A+B+C)
	No. of Subsistence Household (.000)	Average Catch per Household (kg)	Total Estimated Catch (MT) A	Area (Ha)	No of Fry Released (Lakh)	Prod. (MT) B	Area (Ha)	Prod. (MT) C	
Dhaka	306	15.26	4670	736	1.36	98			4768
Faridpur	174	52.07	9060	4327	8.20	1212			10272
Gazipur	273	49.95	13636	8295	2.35	1787			15423
Gopalganj	137	63.21	8660	6707	7.77	1576			10236
Jamalpur	155	28.24	4377	802	5.17	119			4496
Kishorganj	194	88.47	17163	5968	6.12	1309	21590	7185	25657
Madaripur	136	51.05	6943	1248	1.99	248			7191
Manikganj	181	48.22	8728	3150	9.23	861			9589
Munshiganj	230	67.36	15493	5186	4.19	1218			16711
Mymensingh	505	35.60	17978	3115	5.06	824			18802
Narayanganj	287	28.60	8208	259	0.77	29			8237
Narsingdi	212	41.72	8845	1478	2.27	360			9205
Netrakona	120	28.02	3362	4404	5.60	1226	34580	13096	17684
Rajbari	159	51.32	8160	135	9.30	18			8178
Shariatpur	131	47.55	6229	2341	2.21	516			6745
Sherpur	183	20.35	3724	40	1.51	10			3734
Tangail	313	26.15	8185	4051	3.29	936			9121
Dhaka Div.	3696		153421	52242	76.39	12347	56170	20281	186049
Bagerhat	213	35.22	7502	390	0.54	106			7608
Chuadanga	62	11.29	700	0	0.00	0			700
Jessore	265	96.25	25506	104	0.94	31			25537
Jhenaidah	192	35.35	6787	134	0.90	28			6815
Khulna	301	21.14	6363	1282	0.81	362			6725
Kushtia	182	22.55	4104	228	1.17	44			4148
Magura	98	32.99	3233	30	0.11	8			3241
Meherpur	67	23.65	1585	128	0.65	29			1614
Narail	35	62.56	2190	3470	1.52	947			3137
Satkhira	120	24.47	2936	379	0.94	65			3001
Khulna Div.	1535		60906	6145	7.58	1620			62526
Barguna	80	52.02	4162	158	0.52	37			4199
Barisal	216	29.31	6331	1047	2.84	114			6445
Bhola	160	35.12	5619	0	0.00				5619
Jhalokathi	122	31.45	3837	1166	2.55	149			3986
Patuakhali	184	56.18	10337	0	0.00				10337
Pirojpur	111	34.90	3874	333	0.19	43			3917
Barisal Div.	873		34160	2704	6.10	343			34503

District	Subsistence Fisheries			Fry Released Program			Haor		Total Production (MT) (A+B+C)
	No. of Subsistence Household (.000)	Average Catch per Household (kg)	Total Estimated Catch (MT) A	Area (Ha)	No of Fry Released (Lakh)	Prod. (MT) B	Area (Ha)	Prod. (MT) C	
Dinajpur	421	14.16	5961	341	0.36	54			6015
Gaibandha	304	16.50	5016	1105	1.70	165			5181
Kurigram	241	42.63	10274	1777	4.22	381			10655
Lalmonirhat	119	18.45	2196	30	1.00	5			2201
Nilphamari	121	31.18	3773	856	3.48	222			3995
Panchagarh	132	13.65	1802	1595	0.50	354			2156
Rangpur	210	27.24	5720	603	3.46	145			5865
Thakurgaon	114	17.18	1959	996	0.79	198			2157
Rangpur Div.	1662		36701	7303	15.51	1524			38225
Bogra	300	51.35	15405	82	0.31	20			15425
C. Nawabganj	87	33.80	2941	2383	21.86	738			3679
Joypurhat	117	46.08	5391	50	0.21	18			5409
Naogaon	333	38.73	12897	428	1.36	70			12967
Natore	208	46.16	9601	973	3.54	121			9722
Pabna	293	32.83	9619	9573	6.09	2936			12555
Rajshahi	215	61.50	13223	765	1.28	248			13471
Sirajganj	347	54.17	18797	8531	11.61	2593			21390
Rajshahi Div.	1900		87874	22785	46.26	6744			94618
Bandarban	18	8.02	144	0	0.00				144
Brahmanbaria	273	55.32	15102	602	2.25	128	2000	550	15780
Chandpur	251	82.85	20795	92	3.70	13			20808
Chittagong	590	51.47	30367	0	0.00				30367
Comilla	365	35.11	12815	3491	2.70	891			13706
Cox's Bazar	91	32.87	2991	0	0.00				2991
Feni	153	120.74	18473	0	0.00				18473
Khagrachari	0	0.00	0	0	0.00				0
Lakshmipur	146	41.17	6011	664	1.70	212			6223
Noakhali	412	73.08	30109	10817	1.19	3811			33920
Rangamati	0	0.00	0	78	1.45	15			15
Ctg. Div.	2299		136807	15744	12.99	5070	2000	550	142427
Habiganj	206	110.05	22670	7810	8.31	2627	8380	2867	28164
Moulvibazar	254	103.56	26304	5770	3.62	1776	20307	8541	36621
Sunamganj	242	121.43	29386	5553	14.17	1880	56149	21983	53249
Sylhet	168	106.25	17850	2963	3.79	653	14894	6445	24948
Sylhet Div.	870		96210	22096	29.89	6936	99730	39836	142982
Total	12835	47.22	606079	129019	194.72	34584	157900	60667	701330

Source	Area (Ha)	Production (MT)	%	MT/Ha
Subsistence Fisheries	2415385	606079	86.42	0.251
Fry Released Program	129019	34584	4.93	0.268
Haor	157900	60667	8.65	0.384
Total	2702304	701330	100.00	0.260

**Table 15. Species Composition of Annual Fish Catch of Flood Plain
2012-13**

Sl. No.	Species	Production	
		(MT)	%
1	Rui	18766	2.68
2	Catla	11246	1.60
3	Mrigal	7521	1.07
4	Kalibaus	1195	0.17
5	Bata	211	0.03
6	Gonia	914	0.13
7	Silver Carp	773	0.11
8	Grass Carp	1617	0.23
9	Mirror/Common Carp	13635	1.94
10	Other Exotic Carp	0	0.00
11	Pangas	7450	1.06
12	Boal/Air/Guizza Air	67333	9.60
13	Shol/Gazar/Taki	46810	6.68
14	Koi	4850	0.69
15	Shingi/Magur	43788	6.25
16	Big Shrimp/Prawn	1195	0.17
17	Small Shrimp/Prawn	31628	4.51
18	Telapia/Nilotica	0	0.00
19	Sarpunti/Thai punti	13354	1.90
20	Other Fish	429044	61.18
	TOTAL	701330	100.00

**Table 16. Annual Fish Production of Pond
2012-13**

Sl. No.	District	Area in Hectare						Production in Metric Ton						
		Extensive		Semi-intensive		Intensive		Highly Intensive		Derelict		Total		
		Area	Prod.	Area	Prod.	Area	Prod.	Area	Prod.	Area	Prod.	Area	Prod.	
1	Dhaka	15	20	1168	2705	976	5021					2159	7746	3.588
2	Faridpur	1558	2230	2051	7550	251	1851			33	35	3893	11666	2.997
3	Gazipur	89	129	3003	11481	716	4439	83	1270			3891	17319	4.451
4	Gopalganj	136	205	2329	7465	469	2398			3	1	2937	10069	3.428
5	Jamalpur	60	141	1355	4909	1767	7201			1	2	3183	12253	3.850
6	Kishorgonj	517	757	3412	13577	424	2283	38	402			4391	17019	3.876
7	Madaripur	394	498	1773	5147	488	2345					2655	7990	3.009
8	Manikgonj	470	763	1263	3745	753	3153					2486	7661	3.082
9	Munsigonj	443	681	1427	4714	106	473			5	5	1981	5873	2.965
10	Mymensingh	5850	6716	7023	18711	7325	54010	6925	191000			27123	270437	9.971
11	Narayangonj	411	896	1478	4054	1113	1559					3002	6509	2.168
12	Narsingdi	294	296	881	2443	982	6778	189	2878			2346	12395	5.283
13	Netrokona	1844	2751	3750	13893	1395	7323	22	222	22	26	7033	24215	3.443
14	Rajbari	845	1003	1573	5106	749	3494					3167	9603	3.032
15	Shariatpur	101	144	1933	6220	1298	3852					3332	10216	3.066
16	Sherpur	439	701	1830	6244	1429	8146					3698	15091	4.081
17	Tangail	394	605	3620	11987	2969	13604	108	1389			7091	27585	3.890
	Dhaka Div.	13860	18536	39869	129951	23210	127930	7365	197161	64	69	84368	473647	5.614

Cont....

Area in Hectare Production in Metric Ton

Sl. No.	District	Extensive < 1.5 MT/Ha		Semi-intensive 1.5 – 4.0 MT/Ha		Intensive 4.0> - 10.0 MT/Ha		Highly Intensive 10.0> MT/Ha		Derelict		Total				
		Area	Prod.	Area	Prod.	Area	Prod.	Area	Prod.	Area	Prod.	Area	Prod.	Area	Prod.	MT/Ha
18	Bagerhat	2366	2511	2841	9978	153	652			8	2	5368	13143	2.448		
19	Chuadanga			1030	2832	846	3719	50	520			1926	7071	3.671		
20	Jessore	1472	1638	7173	25437	4885	39390	758	13091			14288	79556	5.568		
21	Jhinaedah	16	16	2609	9992	1257	6272					3882	16280	4.194		
22	Khulna	2400	3341	1522	5465	199	1022	178	2480			4299	12308	2.863		
23	Kushtia	336	494	3462	9420	825	4250					4623	14164	3.064		
24	Magura	72	101	1682	5583	302	1434					2056	7118	3.462		
25	Meherpur	5	8	1134	3568	165	775					1304	4351	3.337		
26	Narail	308	398	690	1844	190	905					1188	3147	2.649		
27	Satkhira	9638	5521	2885	10293	1879	12290	178	2552			14580	30656	2.103		
	Khulna Div.	16613	14028	25028	84412	10701	70709	1164	18643	8	2	53514	187794	3.509		
28	Barguna	509	581	2271	4705	63	289			7	2	2850	5577	1.957		
29	Barisal			9167	27546	78	331			27	13	9272	27890	3.008		
30	Bhola	644	1035	1844	5952	5918	25317					8406	32304	3.843		
31	Jhalokathi			1122	3134			2	25			1124	3159	2.810		
32	Patuakhali	4984	6983	3641	9574	65	309			34	17	8724	16883	1.935		
33	Pirojpur	422	589	2290	7352	209	1149			57	37	2978	9127	3.065		
	Barisal Div.	6559	9188	20335	58263	6333	27395	2	25	125	69	33354	94940	2.846		

Cont....

Area in Hectare

Production in Metric Ton

Sl. No.	District	Extensive		Semi-intensive		Intensive		Highly Intensive		Derelict		Total				
		< 1.5 MT/Ha		1.5 – 4.0 MT/Ha		4.0> - 10.0 MT/Ha		10.0> MT/Ha		Area	Prod.	Area	Prod.	Area	Prod.	MT/Ha
		Area	Prod.	Area	Prod.	Area	Prod.	Area	Prod.							
34	Dinajpur	1590	2238	5659	18577	1248	7137	37	548	11	5	8545	28505	3.336		
35	Gaibandha			2966	9400	122	645					3088	10045	3.253		
36	Kurigram	3	4	3174	8517	306	1711					3483	10232	2.938		
37	Lalmonirhat	443	546	1839	6446	33	192					2315	7184	3.103		
38	Nilphamari	693	889	1634	4439	583	2745					2910	8073	2.774		
39	Panchagarh			1186	3975	1032	4259					2218	8234	3.712		
40	Rangpur	16	15	3607	10826	198	1149					3821	11990	3.138		
41	Thakurgaon			4390	12534	826	3391	18	312			5234	16237	3.102		
	Rangpur Div.	2745	3692	24455	74714	4348	21229	55	860	11	5	31614	100500	3.179		
42	Bogra	1593	2797	7416	23081	2001	12879	368	6406			11378	45163	3.969		
43	C.Nawabganj	539	1163	1168	3809	393	1611					2100	6583	3.135		
44	Joypurhat	41	47	2610	6571	1410	7555	161	1918			4222	16091	3.811		
45	Naogaon	580	1325	9230	32184	2218	10260					12028	43769	3.639		
46	Natore	354	517	4523	15192	1901	9088	35	359	14	4	6827	25160	3.685		
47	Pabna			7653	27315	945	5992	5	121			8603	33428	3.886		
48	Rajshahi	3	3	6502	26023	3524	17259					10029	43285	4.316		
49	Sirajganj	240	305	2743	8187	1234	6177					4217	14669	3.479		
	Rajshahi Div.	3350	6157	41845	142362	13626	70821	569	8804	14	4	59404	228148	3.841		

Area in Hectare Production in Metric Ton

Sl. No.	District	Extensive < 1.5 MT/Ha		Semi-intensive 1.5 – 4.0 MT/Ha		Intensive 4.0 > - 10.0 MT/Ha		Highly Intensive 10.0 > MT/Ha		Derelict		Total		
		Area	Prod.	Area	Prod.	Area	Prod.	Area	Prod.	Area	Prod.	Area	Prod.	MT/Ha
50	Bandarban	289	380	293	623	32	145					614	1148	1.870
51	B.Barua	185	299	3973	12344	2508	10980	31	362	22	4	6719	23989	3.570
52	Chandpur	129	147	7501	24141	1724	8016					9354	32304	3.453
53	Chittagong	6145	8473	8310	25535	1717	10096			149	28	16321	44132	2.704
54	Comilla	2589	3729	11749	38058	8771	55427	1302	13311	15	7	24426	110532	4.525
55	Cox's Bazar	1706	1548	1101	2668	65	327	24	280	265	58	3161	4881	1.544
56	Feni	881	1153	3363	10313	728	3340	25	272	4	5	5001	15083	3.016
57	Khagrachari	187	282	930	1929	80	331					1197	2542	2.124
58	Lakshmipur	630	788	8158	27289	1665	8542	40	430			10493	37049	3.531
59	Noakhali	5615	7731	8499	33432	231	1330					14345	42493	2.962
60	Rangamati	60	71	670	1601	12	71					742	1743	2.349
	Ctg Div.	18416	24601	54547	177933	17533	98605	1422	14655	455	102	92373	315896	3.420
61	Habiganj	811	1135	1974	5963	1058	5484					3843	12582	3.274
62	Moulvibazar	1430	1990	1381	3781	1146	6004					3957	11775	2.976
63	Sunamganj	518	722	1604	4927	227	1209			12	13	2361	6871	2.910
64	Sylhet	2482	2125	2743	6682	1163	5518	3	59	130	57	6521	14441	2.215
	Sylhet Div.	5241	5972	7702	21353	3594	18215	3	59	142	70	16682	45669	2.738
	Grand Total	66784	82174	213781	688988	79345	434904	10580	240207	819	321	371309	1446594	3.896

Culture Method	Range	Number of Pond	Area		Production		MT/Ha
			(Ha)	%	(MT)	%	
Extensive	<1.5MT/Ha	505555	66784	17.99	82174	5.68	1.230
Semi-intensive	1.5-4 MT/Ha	1253110	213781	57.57	688988	47.63	3.223
Intensive	4>10MT/Ha	347136	79345	21.37	434904	30.06	5.481
Highly Intensive	10 > MT/Ha	46388	10580	2.85	240207	16.61	22.704
Derelict Pond		9240	819	0.22	321	0.02	0.392
Total		2161429	371309	100.00	1446594	100.00	3.896

Source : Area from SPARRSO (Space Research and remote Sensing Organization) Report, 1983 and updated on the basis of DFO (District Fisheries Office) Report 2012-2013.

**Table 17. Culture-wise Species Composition of Annual Fish Production of Pond
2012-13**

Sl. No.	Species	Extensive		Semi intensive		Intensive		Highly Intensive		Derelict		Total	
		<1.5 MT/Ha		1.5 – 4.0 MT/Ha		4.0> - 10.0 MT/Ha		10.0 > MT/Ha		MT		%	
		MT	%	MT	%	MT	%	MT	%	MT	%	MT	%
1	Rui	19502	23.73	138837	20.15	61163	14.06	7584	3.16	9	2.80	227095	15.70
2	Catla	15688	19.09	103910	15.08	42847	9.85	2466	1.03	5	1.56	164916	11.40
3	Mrigal	13778	16.77	89580	13.00	33421	7.68	5830	2.43	13	4.05	142622	9.86
4	Kalibaus	1383	1.68	8131	1.18	3367	0.77	613	0.26	0	0.00	13494	0.93
5	Bata	1254	1.53	13787	2.00	6293	1.45	490	0.20	0	0.00	21824	1.51
6	Gonia	330	0.40	4239	0.62	1305	0.30	0	0.00	0	0.00	5874	0.41
7	Silver carp	12808	15.59	115665	16.79	43180	9.93	9672	4.03	17	5.30	181342	12.54
8	Grass carp	2840	3.46	21534	3.13	8920	2.05	1517	0.63	2	0.62	34813	2.41
9	Mirror/Common carp	3972	4.83	50147	7.28	14959	3.44	2262	0.94	14	4.36	71354	4.93
10	Other Exotic carp	462	0.56	5026	0.73	2459	0.57	285	0.12	0	0.00	8232	0.57
11	Pangas	464	0.56	38790	5.63	62704	14.42	176794	73.60	0	0.00	278752	19.27
12	Boal/Air	165	0.20	147	0.02	27	0.01	0	0.00	12	3.74	351	0.02
13	Shol/Gazar/Taki	357	0.43	211	0.03	105	0.02	0	0.00	46	14.33	719	0.05
14	Koi	169	0.21	2292	0.33	34585	7.95	1685	0.70	8	2.49	38739	2.68
15	Shingi/Magur	84	0.10	3016	0.44	4473	1.03	3004	1.25	18	5.61	10595	0.73
16	Big Shrimp/ Prawn	547	0.67	915	0.13	30	0.01	2	0.00	0	0.00	1494	0.10
17	Small Shrimp/ Prawn	139	0.17	260	0.04	1635	0.38	8	0.00	22	6.85	2064	0.14
18	Tilapia/ Nilotica	5004	6.09	67607	9.81	104140	23.94	27100	11.28	25	7.79	203876	14.09
19	Sarpunti/Thai punti	1854	2.26	19419	2.82	8601	1.98	872	0.36	4	1.25	30750	2.13
20	Other Inland Fish	1374	1.67	5475	0.79	690	0.16	23	0.01	126	39.25	7688	0.53
	Total	82174	100.00	688988	100.00	434904	100.00	240207	100.00	321	100.00	1446594	100.00

Note: 1. Big Shrimp/Prawn Galda/ Bagda
2. Small Shrimp/Prawn Other Inland Chingri
3. Other Fish Chapila, Tengra, Puntti, Chital, Phali, Mola etc

**Table 18. District-wise Species Composition of Fish Production of Pond
2012-13**

Sl. No.	Species	Dhaka		Faridpur		Gazipur		Gopalganj		Jamalpur		Kisorganj		Madaripur		Manikganj		Munshiganj	
		MT	%	MT	%	MT	%	MT	%	MT	%	MT	%	MT	%	MT	%	MT	%
1	Rui	1537	19.84	2686	23.02	1617	9.34	900	8.94	1452	11.85	3075	18.07	1983	24.82	1191	15.55	1259	21.44
2	Catla	1316	16.99	1541	13.21	1724	9.95	1057	10.50	1101	8.98	1699	9.98	1042	13.04	579	7.56	1053	17.93
3	Mrigal	751	9.70	1678	14.38	1475	8.52	485	4.82	899	7.34	2266	13.31	1598	20.00	870	11.36	809	13.77
4	Kalibaus	221	2.85	14	0.12	230	1.33	21	0.21	9	0.07	370	2.17	0	0.00	165	2.15	379	6.45
5	Bata	331	4.27	66	0.57	0	0.00	4	0.04	366	2.99	180	1.06	341	4.27	452	5.90	350	5.96
6	Gonia	0	0.00	0	0.00	0	0.00	0	0.00	15	0.12	11	0.06	0	0.00	42	0.55	180	3.06
7	Silver carp	2029	26.20	2792	23.93	3154	18.21	1016	10.09	1970	16.08	3390	19.92	1683	21.06	1144	14.93	597	10.17
8	Grass carp	354	4.57	234	2.01	1057	6.10	225	2.23	525	4.28	783	4.60	0	0.00	126	1.64	50	0.85
9	Mirror/Common carp	299	3.86	1027	8.80	1810	10.45	481	4.78	637	5.20	1724	10.13	497	6.22	211	2.75	206	3.51
10	Other Exotic carp	106	1.37	0	0.00	3	0.02	0	0.00	313	2.55	1044	6.14	0	0.00	0	0.00	22	0.37
11	Pangas	0	0.00	57	0.49	1229	7.10	0	0.00	3472	28.34	747	4.39	0	0.00	1483	19.36	76	1.29
12	Boal/Air	0	0.00	0	0.00	0	0.00	0	0.00	0	0.00	0	0.00	0	0.00	0	0.00	17	0.29
13	Shol/Gazar/Taki	0	0.00	0	0.00	0	0.00	0	0.00	0	0.00	0	0.00	0	0.00	7	0.09	56	0.95
14	Koi	1	0.01	153	1.31	0	0.00	1526	15.15	0	0.00	101	0.59	0	0.00	504	6.58	10	0.17
15	Shingi/Magur	87	1.12	656	5.62	0	0.00	408	4.05	180	1.47	22	0.13	0	0.00	169	2.21	9	0.15
16	Big Shrimp/ Prawn	0	0.00	0	0.00	0	0.00	0	0.00	0	0.00	0	0.00	0	0.00	0	0.00	0	0.00
17	Small Shrimp/ Prawn	68	0.88	17	0.15	0	0.00	0	0.00	0	0.00	0	0.00	0	0.00	0	0.00	3	0.05
18	Tilapia/ Nilotica	379	4.89	297	2.55	3690	21.31	3808	37.82	1198	9.78	1062	6.24	0	0.00	459	5.99	253	4.31
19	Sarpunti/Thai punti	249	3.22	315	2.70	1324	7.64	121	1.20	114	0.93	500	2.94	846	10.59	190	2.48	375	6.39
20	Other Inland Fish	18	0.23	133	1.14	6	0.03	17	0.17	2	0.02	45	0.27	0	0.00	69	0.90	169	2.89
	Total	7746	100	11666	100	17319	100	10069	100	12253	100	17019	100	7990	100	7661	100	5873	100

Sl. No.	Species	Mymensingh		Narayanganj		Narsingdi		Netrakona		Rajbari		Sariatpur		Sherpur		Tangail	
		MT	%	MT	%	MT	%	MT	%	MT	%	MT	%	MT	%	MT	%
1	Rui	12479	4.61	1313	20.17	1051	8.48	5035	20.79	1784	18.58	2691	26.34	1595	10.57	5438	19.71
2	Catla	6976	2.58	784	12.04	530	4.28	1928	7.96	1470	15.31	2575	25.20	946	6.27	3413	12.37
3	Mrigal	7632	2.82	818	12.57	579	4.67	3195	13.20	1324	13.79	2042	19.99	1560	10.34	3857	13.98
4	Kalibaus	817	0.30	56	0.86	326	2.63	269	1.11	0	0.00	392	3.84	171	1.13	112	0.41
5	Bata	578	0.21	100	1.54	194	1.57	85	0.35	157	1.64	0	0.00	140	0.93	282	1.02
6	Gonia	233	0.09	0	0.00	164	1.32	291	1.20	0	0.00	0	0.00	89	0.59	0	0.00
7	Silver carp	15152	5.60	735	11.29	1001	8.08	3527	14.57	1450	15.10	1429	13.99	4068	26.96	4651	16.86
8	Grass carp	3705	1.37	141	2.17	150	1.21	252	1.04	213	2.22	84	0.82	890	5.90	617	2.24
9	Mirror/Common carp	4664	1.73	269	4.13	227	1.83	819	3.38	541	5.63	539	5.28	1145	7.59	1215	4.41
10	Other Exotic carp	0	0.00	21	0.32	8	0.06	9	0.04	0	0.00	0	0.00	342	2.26	0	0.00
11	Pangas	159594	59.01	311	4.78	3297	26.60	1474	6.09	1510	15.72	0	0.00	2045	13.55	3023	10.96
12	Boal/Air	0	0.00	1	0.02	0	0.00	0	0.00	0	0.00	0	0.00	0	0.00	0	0.00
13	Shol/Gazar/Taki	0	0.00	8	0.12	0	0.00	9	0.04	0	0.00	0	0.00	0	0.00	0	0.00
14	Koi	27644	10.22	170	2.61	2675	21.58	277	1.14	5	0.05	0	0.00	0	0.00	133	0.48
15	Shingi/Magur	6125	2.27	225	3.46	93	0.75	9	0.04	8	0.08	0	0.00	0	0.00	231	0.84
16	Big Shrimp/ Prawn	0	0.00	12	0.18	0	0.00	0	0.00	0	0.00	0	0.00	0	0.00	0	0.00
17	Small Shrimp/ Prawn	0	0.00	26	0.40	0	0.00	8	0.03	6	0.06	0	0.00	0	0.00	0	0.00
18	Tilapia/ Nilotica	21272	7.87	1195	18.36	1787	14.42	5609	23.16	801	8.34	416	4.07	1188	7.87	4279	15.51
19	Sarpunti/Thai punti	3455	1.28	222	3.41	293	2.36	1363	5.63	303	3.16	28	0.27	862	5.71	303	1.10
20	Other Inland Fish	111	0.04	102	1.57	20	0.16	56	0.23	31	0.32	20	0.20	50	0.33	31	0.11
	Total	270437	100.00	6509	100.00	12395	100.00	24215	100.00	9603	100.00	10216	100.00	15091	100.00	27585	100.00

Sl. No.	Species	Bagerhat		Chuadanga		Jessore		Jhenaidah		Khulna		Kushtia		Magura		Meherpur	
		MT	%	MT	%	MT	%	MT	%	MT	%	MT	%	MT	%	MT	%
1	Rui	4534	34.50	1320	18.67	10831	13.61	3204	19.68	1701	13.82	1782	12.58	1507	21.17	1040	23.90
2	Catla	3308	25.17	869	12.29	6806	8.56	1789	10.99	1045	8.49	1464	10.34	1212	17.03	234	5.38
3	Mrigal	2180	16.58	1186	16.77	6543	8.22	2046	12.57	1530	12.43	1133	8.00	1220	17.14	827	19.01
4	Kalibaus	206	1.57	0	0.00	82	0.10	21	0.13	23	0.19	53	0.37	0	0.00	0	0.00
5	Bata	13	0.10	247	3.49	965	1.21	15	0.09	119	0.97	634	4.48	73	1.03	0	0.00
6	Gonia	0	0.00	0	0.00	0	0.00	0	0.00	0	0.00	0	0.00	0	0.00	0	0.00
7	Silver carp	822	6.25	2377	33.62	10446	13.13	4119	25.30	2227	18.09	998	7.05	1820	25.57	1351	31.05
8	Grass carp	642	4.88	205	2.90	3347	4.21	706	4.34	551	4.48	165	1.16	411	5.77	12	0.28
9	Mirror/Common carp	499	3.80	384	5.43	4359	5.48	1330	8.17	573	4.65	444	3.13	613	8.61	265	6.09
10	Other Exotic carp	143	1.09	0	0.00	139	0.18	29	0.18	4	0.03	0	0.00	0	0.00	0	0.00
11	Pangas	0	0.00	59	0.83	11405	14.34	0	0.00	785	6.38	1129	7.97	0	0.00	612	14.06
12	Boal/Air	90	0.68	0	0.00	0	0.00	0	0.00	0	0.00	0	0.00	0	0.00	0	0.00
13	Shol/Gazar/Taki	55	0.42	0	0.00	136	0.17	0	0.00	1	0.01	0	0.00	0	0.00	0	0.00
14	Koi	0	0.00	0	0.00	2186	2.75	0	0.00	776	6.30	565	3.99	0	0.00	0	0.00
15	Shingi/Magur	0	0.00	0	0.00	7	0.01	0	0.00	0	0.00	79	0.56	0	0.00	0	0.00
16	Big Shrimp/ Prawn	189	1.44	0	0.00	225	0.28	0	0.00	250	2.03	0	0.00	0	0.00	0	0.00
17	Small Shrimp/ Prawn	0	0.00	10	0.14	30	0.04	0	0.00	2	0.02	0	0.00	0	0.00	0	0.00
18	Tilapia/ Nilotica	306	2.33	63	0.89	20564	25.85	2681	16.47	1826	14.84	5403	38.15	70	0.98	0	0.00
19	Sarpunti/Thai punti	64	0.49	315	4.46	1189	1.49	300	1.84	262	2.13	47	0.33	180	2.53	2	0.05
20	Other Inland Fish	92	0.70	36	0.51	296	0.37	40	0.24	633	5.14	268	1.89	12	0.17	8	0.18
	Total	13143	100.00	7071	100.00	79556	100.00	16280	100.00	12308	100.00	14164	100.00	7118	100.00	4351	100.00

Cont....

Sl. No.	Species	Narail		Satkhira		Barguna		Barisal		Bhola		Jhalokathi		Patuakhali		Pirojpur	
		MT	%	MT	%	MT	%	MT	%	MT	%	MT	%	MT	%	MT	%
1	Rui	1077	34.22	3061	9.98	1382	24.78	4253	15.25	5790	17.92	461	14.59	3611	21.39	2797	30.65
2	Catla	965	30.66	2993	9.76	706	12.66	2887	10.35	4971	15.39	386	12.22	3699	21.91	2163	23.70
3	Mrigal	627	19.92	2995	9.77	975	17.48	2845	10.20	2163	6.70	522	16.52	2120	12.56	1141	12.50
4	Kalibaus	3	0.10	118	0.39	0	0.00	187	0.67	330	1.02	0	0.00	10	0.06	20	0.22
5	Bata	71	2.26	272	0.89	0	0.00	0	0.00	0	0.00	0	0.00	0	0.00	0	0.00
6	Gonia	0	0.00	0	0.00	0	0.00	0	0.00	0	0.00	0	0.00	0	0.00	0	0.00
7	Silver carp	39	1.24	3497	11.41	1458	26.14	3124	11.20	2666	8.25	568	17.98	1079	6.39	973	10.66
8	Grass carp	26	0.83	2127	6.94	131	2.35	441	1.58	444	1.38	215	6.81	185	1.09	159	1.74
9	Mirror/Common carp	58	1.84	1647	5.37	190	3.41	616	2.21	513	1.59	246	7.79	158	0.94	452	4.95
10	Other Exotic carp	0	0.00	0	0.00	0	0.00	0	0.00	0	0.00	0	0.00	199	1.18	63	0.69
11	Pangas	0	0.00	1689	5.51	108	1.94	6802	24.39	7948	24.60	13	0.41	4126	24.44	76	0.83
12	Boal/Air	0	0.00	0	0.00	0	0.00	0	0.00	0	0.00	0	0.00	12	0.07	0	0.00
13	Shol/Gazar/Taki	0	0.00	18	0.06	0	0.00	0	0.00	0	0.00	0	0.00	31	0.18	96	1.05
14	Koi	35	1.11	0	0.00	0	0.00	346	1.24	0	0.00	0	0.00	0	0.00	106	1.16
15	Shingi/Magur	0	0.00	0	0.00	0	0.00	184	0.66	0	0.00	0	0.00	0	0.00	0	0.00
16	Big Shrimp/ Prawn	163	5.18	0	0.00	0	0.00	0	0.00	0	0.00	0	0.00	306	1.81	0	0.00
17	Small Shrimp/ Prawr	0	0.00	77	0.25	0	0.00	0	0.00	0	0.00	0	0.00	0	0.00	0	0.00
18	Tilapia/ Nilotica	0	0.00	12088	39.43	452	8.11	5508	19.75	6991	21.64	698	22.10	1060	6.28	928	10.17
19	Sarpunti/Thai punti	30	0.95	38	0.12	114	2.04	591	2.12	365	1.13	0	0.00	86	0.51	50	0.55
20	Other Inland Fish	53	1.69	36	0.12	61	1.09	106	0.38	123	0.38	50	1.58	201	1.19	103	1.13
	Total	3147	100.00	30656	100.00	5577	100.00	27890	100.00	32304	100.00	3159	100.00	16883	100.00	9127	100.00

Sl. No.	Species	Dinajpur		Gaibanda		Kurigram		Lalmonirhat		Nilphamari		Panchagar		Rangpur		Thakurgoan	
		MT	%	MT	%	MT	%	MT	%	MT	%	MT	%	MT	%	MT	%
1	Rui	4348	15.25	2767	27.55	1215	11.87	1736	24.16	1995	24.71	1751	21.27	2311	19.27	2965	18.26
2	Catla	3135	11.00	1519	15.12	1456	14.23	627	8.73	835	10.34	1197	14.54	1827	15.24	2648	16.31
3	Mrigal	2848	9.99	1381	13.75	1208	11.80	920	12.81	1110	13.75	1166	14.16	1763	14.70	3060	18.85
4	Kalibaus	194	0.68	0	0.00	37	0.36	0	0.00	0	0.00	57	0.69	105	0.88	470	2.89
5	Bata	1082	3.80	327	3.25	1205	11.78	293	4.08	479	5.93	61	0.74	212	1.77	1344	8.28
6	Gonia	1380	4.84	0	0.00	670	6.55	0	0.00	0	0.00	0	0.00	0	0.00	0	0.00
7	Silver carp	5541	19.44	2160	21.50	2074	20.27	2057	28.63	2051	25.41	851	10.33	3281	27.36	3266	20.11
8	Grass carp	613	2.15	252	2.51	357	3.49	141	1.96	203	2.52	191	2.32	246	2.05	341	2.10
9	Mirror/Common carp	2225	7.80	733	7.30	1111	10.86	808	11.25	669	8.29	292	3.55	924	7.71	932	5.74
10	Other Exotic carp	413	1.45	105	1.04	254	2.48	23	0.32	248	3.07	74	0.90	21	0.17	0	0.00
11	Pangas	2403	8.43	0	0.00	0	0.00	0	0.00	0	0.00	0	0.00	244	2.04	0	0.00
12	Boal/Air	6	0.02	0	0.00	0	0.00	0	0.00	0	0.00	0	0.00	0	0.00	0	0.00
13	Shol/Gazar/Taki	79	0.28	7	0.07	0	0.00	0	0.00	6	0.07	0	0.00	0	0.00	0	0.00
14	Koi	13	0.05	0	0.00	0	0.00	0	0.00	0	0.00	0	0.00	0	0.00	0	0.00
15	Shingi/Magur	46	0.16	0	0.00	0	0.00	0	0.00	1	0.01	0	0.00	2	0.02	0	0.00
16	Big Shrimp/Prawn	0	0.00	0	0.00	0	0.00	0	0.00	0	0.00	0	0.00	0	0.00	0	0.00
17	Small Shrimp/Prawn	0	0.00	15	0.15	16	0.16	0	0.00	5	0.06	9	0.11	0	0.00	8	0.05
18	Tilapia/Nilotica	3247	11.39	237	2.36	142	1.39	357	4.97	128	1.59	2441	29.64	490	4.09	1083	6.67
19	Sarpunti/Thai punti	796	2.79	458	4.56	437	4.27	170	2.37	277	3.43	131	1.59	488	4.07	12	0.07
20	Other Inland Fish	136	0.48	84	0.84	50	0.49	52	0.72	66	0.82	13	0.16	76	0.63	108	0.67
	Total	28505	100.00	10045	100.00	10232	100.00	7184	100.00	8073	100.00	8234	100.00	11990	100.00	16237	100.00

Cont....

Sl. No.	Species	Bogra		C Nawabganj		Joypurhat		Naogaon		Natore		Pabna		Rajshahi		Sirajganj	
		MT	%	MT	%	MT	%	MT	%	MT	%	MT	%	MT	%	MT	%
1	Rui	6677	14.78	1656	25.15	3094	19.23	7983	18.24	6697	26.62	7680	22.98	10929	25.25	2268	15.46
2	Catla	5061	11.21	698	10.60	1956	12.16	5528	12.63	4461	17.73	3557	10.64	6485	14.98	2205	15.03
3	Mrigal	4124	9.13	971	14.75	3247	20.18	5756	13.15	4199	16.69	4961	14.84	7555	17.45	1728	11.78
4	Kalibaus	0	0.00	0	0.00	38	0.24	105	0.24	19	0.07	472	1.41	306	0.71	422	2.88
5	Bata	1788	3.96	487	7.40	404	2.51	1099	2.51	1640	6.52	897	2.69	549	1.27	1341	9.14
6	Gonia	0	0.00	0	0.00	0	0.00	0	0.00	0	0.00	0	0.00	0	0.00	76	0.52
7	Silver carp	6889	15.25	1603	24.35	2904	18.05	6228	14.23	5545	22.04	7201	21.54	8305	19.19	1845	12.58
8	Grass carp	2079	4.60	200	3.04	455	2.83	853	1.95	502	1.99	921	2.76	1065	2.46	348	2.37
9	Mirror/Common carp	8326	18.44	557	8.46	1449	9.00	4381	10.01	906	3.60	1649	4.93	4955	11.45	1064	7.25
10	Other Exotic carp	787	1.74	176	2.68	551	3.42	1654	3.78	73	0.29	98	0.29	150	0.34	60	0.41
11	Pangas	7021	15.55	0	0.00	119	0.74	7156	16.35	723	2.87	2287	6.84	0	0.00	681	4.64
12	Boal/Air	13	0.03	0	0.00	0	0.00	0	0.00	0	0.00	0	0.00	0	0.00	39	0.27
13	Shol/Gazar/Taki	0	0.00	0	0.00	0	0.00	0	0.00	1	0.01	0	0.00	0	0.00	0	0.00
14	Koi	0	0.00	0	0.00	0	0.00	18	0.04	0	0.00	0	0.00	0	0.00	0	0.00
15	Shingi/Magur	0	0.00	0	0.00	57	0.35	4	0.01	1	0.01	0	0.00	0	0.00	39	0.27
16	Big Shrimp/ Prawn	0	0.00	0	0.00	0	0.00	0	0.00	0	0.00	0	0.00	0	0.00	0	0.00
17	Small Shrimp/ Prawn	0	0.00	0	0.00	0	0.00	0	0.00	1	0.01	0	0.00	0	0.00	0	0.00
18	Tilapia/ Nilotica	1856	4.11	0	0.00	1209	7.51	1418	3.24	298	1.18	2193	6.56	0	0.00	1199	8.17
19	Sarpunti/Thai punti	284	0.63	201	3.05	564	3.51	1099	2.51	5	0.02	1268	3.79	2601	6.01	1126	7.68
20	Other Inland Fish	258	0.57	34	0.52	44	0.27	487	1.11	89	0.35	244	0.73	385	0.89	228	1.55
	Total	45163	100.00	6583	100.00	16091	100.00	43769	100.00	25160	100.00	33428	100.00	43285	100.00	14669	100.00

Cont....

Sl. No.	Species	Bandarban		B-Baria		Chandpur		Chittagong		Comilla		Cox's Bazar		Feni		Khagrachari	
		MT	%	MT	%	MT	%	MT	%	MT	%	MT	%	MT	%	MT	%
1	Rui	325	28.31	5450	22.72	8165	23.27	7265	16.46	15873	14.36	528	10.82	3071	20.36	492	19.36
2	Catla	175	15.24	3603	15.02	4799	14.85	5475	12.41	12251	11.08	944	19.34	4168	27.63	373	14.68
3	Mirgal	156	13.59	2051	8.55	4121	12.76	4747	10.76	5234	4.74	312	6.39	2412	15.99	360	14.16
4	Kalibaas	0	0.00	151	0.63	146	0.45	453	1.03	1010	0.91	137	2.81	81	0.54	2	0.08
5	Bata	0	0.00	578	2.41	1446	4.48	90	0.20	242	0.22	6	0.12	0	0.00	3	0.12
6	Gonia	0	0.00	0	0.00	59	0.18	70	0.16	547	0.50	5	0.10	92	0.61	0	0.00
7	Silver carp	265	23.08	3522	14.68	4092	12.67	1259	2.85	5980	5.41	129	2.64	1538	10.20	674	26.52
8	Grass carp	49	4.27	372	1.55	38	0.12	434	0.98	951	0.86	104	2.13	515	3.41	71	2.79
9	Mirror/Common carp	94	8.19	1010	4.21	2158	6.68	1863	4.22	1093	0.99	47	0.96	207	1.37	253	9.95
10	Other Exotic carp	0	0.00	0	0.00	0	0.00	259	0.59	609	0.55	1	0.02	9	0.06	0	0.00
11	Pangas	0	0.00	3075	12.82	1202	3.72	4547	10.30	30526	27.62	469	9.61	1523	10.10	41	1.61
12	Boal/Air	0	0.00	134	0.56	0	0.00	0	0.00	0	0.00	5	0.10	0	0.00	0	0.00
13	Shol/Gazar/Taki	0	0.00	67	0.28	0	0.00	11	0.03	68	0.06	10	0.21	0	0.00	12	0.47
14	Koi	0	0.00	266	1.11	0	0.00	74	0.17	806	0.73	61	1.25	17	0.11	0	0.00
15	Shingi/Magur	0	0.00	144	0.60	0	0.00	141	0.32	392	0.35	102	2.09	0	0.00	11	0.43
16	Big Shrimp/ Prawn	0	0.00	0	0.00	0	0.00	0	0.00	0	0.00	117	2.41	232	1.54	0	0.00
17	Small Shrimp/ Prawn	0	0.00	62	0.26	0	0.00	358	0.81	1261	1.14	51	1.04	3	0.02	4	0.16
18	Tilapia/ Nilotica	0	0.00	1991	8.30	4954	15.34	16559	37.52	32642	29.53	1747	35.79	1181	7.83	72	2.83
19	Sarpunti/Thai punti	0	0.00	653	2.72	1124	3.48	204	0.46	920	0.83	59	1.21	13	0.09	102	4.01
20	Other Inland Fish	84	7.32	860	3.58	0	0.00	323	0.73	127	0.12	47	0.96	21	0.14	72	2.83
	Total	1148	100.00	23989	100.00	32304	100.00	44132	100.00	110532	100.00	4881	100.00	15083	100.00	2542	100.00

Sl. No.	Species	Lakshmipir		Noakhali		Rangamati		Habiganj		Moulvibazar		Sunamganj		Sylhet		Total	
		MT	%	MT	%	MT	%	MT	%	MT	%	MT	%	MT	%	MT	%
1	Rui	6655	17.96	10505	24.72	459	26.33	1463	11.63	895	7.60	1385	20.16	3055	21.16	227095	15.70
2	Catla	6149	16.60	12876	30.30	406	23.29	1242	9.87	949	8.06	730	10.62	2350	16.27	164916	11.40
3	Mrigal	4533	12.24	4935	11.61	364	20.88	1466	11.65	733	6.23	1376	20.03	1934	13.39	142622	9.86
4	Kalibaus	1798	4.85	2437	5.74	11	0.63	171	1.36	41	0.35	130	1.89	96	0.66	13494	0.93
5	Bata	0	0.00	0	0.00	0	0.00	205	1.63	11	0.09	0	0.00	0	0.00	21824	1.51
6	Gonia	1022	2.76	60	0.14	12	0.69	440	3.50	142	1.21	188	2.74	86	0.60	5874	0.41
7	Silver carp	4393	11.86	5078	11.95	199	11.42	2167	17.22	802	6.81	799	11.63	1292	8.95	181342	12.54
8	Grass carp	511	1.38	1751	4.12	55	3.16	845	6.72	310	2.63	186	2.71	681	4.72	34813	2.41
9	Mirror/Common carp	1362	3.67	1377	3.24	41	2.35	815	6.48	183	1.56	415	6.04	797	5.52	71354	4.93
10	Other Exotic carp	0	0.00	167	0.39	0	0.00	14	0.11	0	0.00	0	0.00	41	0.28	8232	0.57
11	Pangas	1703	4.60	817	1.92	10	0.57	624	4.96	196	1.67	315	4.58	0	0.00	278752	19.27
12	Boal/Air	0	0.00	34	0.08	0	0.00	0	0.00	0	0.00	0	0.00	0	0.00	351	0.02
13	Shol/Gazar/Taki	0	0.00	36	0.09	0	0.00	0	0.00	5	0.04	0	0.00	0	0.00	719	0.05
14	Koi	170	0.46	13	0.03	0	0.00	0	0.00	31	0.26	57	0.83	0	0.00	38739	2.68
15	Shingi/Magur	204	0.55	13	0.03	0	0.00	0	0.00	86	0.73	7	0.10	853	5.91	10595	0.73
16	Big Shrimp/ Prawn	0	0.00	0	0.00	0	0.00	0	0.00	0	0.00	0	0.00	0	0.00	1494	0.10
17	Small Shrimp/ Prawn	0	0.00	13	0.03	0	0.00	7	0.05	4	0.03	0	0.00	0	0.00	2064	0.14
18	Tilapia/ Nilotica	8279	22.34	1374	3.23	177	10.16	2449	19.46	6302	53.52	443	6.45	3077	21.31	203876	14.09
19	Sarpunti/Thai punti	170	0.46	822	1.94	0	0.00	465	3.70	980	8.32	703	10.23	122	0.84	30750	2.13
20	Other Inland Fish	100	0.27	185	0.44	9	0.52	209	1.66	105	0.89	137	1.99	57	0.39	7688	0.53
	Total	37049	100.00	42493	100.00	1743	100.00	12582	100.00	11775	100.00	6871	100.00	14441	100.00	1446594	100.00

Table 19. Annual Fish Production of Seasonal cultured water body

2012-13

Area in Hectare

Production in Metric Ton

Sl. No.	District	Fish Culture in Floodplain & Paddy Field		Fish Culture in Boropit		Total	
		Area	Production	Area	Production	Area	Production
1	Dhaka	1731	2874	11	2	1742	2876
2	Faridpur	1302	1797	132	181	1434	1978
3	Gazipur	2759	4777	3	8	2762	4785
4	Gopalganj	618	448	173	366	791	814
5	Jamalpur	1805	3952	10	9	1815	3961
6	Kishorgonj	2881	4792	0	0	2881	4792
7	Madaripur	5	8	0	0	5	8
8	Manikgonj	2613	1602	10	23	2623	1625
9	Munsigonj	1340	902	18	14	1358	916
10	Mymensingh	1427	5431	154	238	1581	5669
11	Narayangonj	2712	2426	160	349	2872	2775
12	Narsingdi	926	2058	309	1026	1235	3084
13	Netrokona	1138	2457	7	20	1145	2477
14	Rajbari	1103	422	183	202	1286	624
15	Shariatpur	373	647	0	0	373	647
16	Sherpur	1303	1227	6	3	1309	1230
17	Tangail	3229	1906	80	248	3309	2154
	Dhaka Div.	27265	37726	1256	2689	28521	40415
18	Bagerhat	3077	3300	442	548	3519	3848
19	Chuadanga	928	1431	0	0	928	1431
20	Jessore	5400	29280	5	16	5405	29296
21	Jhenaidhah	1936	3325	79	125	2015	3450
22	Khulna	2043	2025	524	437	2567	2462
23	Kushtia	205	96	513	685	718	781
24	Magura	118	25	6	15	124	40
25	Meherpur	202	279	12	8	214	287
26	Narail	1102	2118	211	262	1313	2380
27	Satkhira	5403	8150	340	345	5743	8495
	Khulna Div.	20414	50029	2132	2441	22546	52470
28	Barguna	1101	1026	28	31	1129	1057
29	Barisal	6873	8920	0	0	6873	8920
30	Bhola	0	0	129	315	129	315
31	Jhalokathi	722	1118	0	0	722	1118
32	Patuakhali	3127	4135	53	95	3180	4230
33	Pirojpur	423	340	728	874	1151	1214
	Barisal Div.	12246	15539	938	1315	13184	16854

Area in Hectare

Production in Metric Ton

Sl. No.	District	Fish Culture in Floodplain & Paddy Field		Fish Culture in Boropit		Total	
		Area	Production	Area	Production	Area	Production
34	Dinajpur	2232	2464	360	612	2592	3076
35	Gaibandha	778	794	92	182	870	976
36	Kurigram	1445	868	338	592	1783	1460
37	Lalmonirhat	585	354	50	179	635	533
38	Nilphamari	104	43	175	102	279	145
39	Panchagarh	93	42	132	65	225	107
40	Rangpur	1473	1844	196	256	1669	2100
41	Thakurgaon	30	14	17	12	47	26
	Rangpur Div.	6740	6423	1360	2000	8100	8423
42	Bogra	581	1203	27	77	608	1280
43	C.Nawabganj	1650	858	0	0	1650	858
44	Joypurhat	175	17	18	36	193	53
45	Naogaon	3037	3395	0	0	3037	3395
46	Natore	177	250	135	196	312	446
47	Pabna	8152	6511	565	1678	8717	8189
48	Rajshahi	2413	4719	66	94	2479	4813
49	Sirajganj	2404	3209	326	1024	2730	4233
	Rajshahi Div.	18589	20162	1137	3105	19726	23267
50	Bandarban	0	0	0	0	0	0
51	B.Barua	2780	2182	57	112	2837	2294
52	Chandpur	364	757	294	757	658	1514
53	Chittagong	47	40	183	419	230	459
54	Comilla	15891	29605	83	21	15974	29626
55	Cox's Bazar	25	3	41	19	66	22
56	Feni	2954	5020	0	0	2954	5020
57	Khagrachari	28	14	36	25	64	39
58	Lakshmipur	116	126	223	450	339	576
59	Noakhali	4462	6433	105	112	4567	6545
60	Rangamati	18	11	0	0	18	11
	Ctg. Div.	26685	44191	1022	1915	27707	46106
61	Habiganj	104	73	9	17	113	90
62	Moulvibazar	21	26	386	654	407	680
63	Sunamganj	559	571	204	108	763	679
64	Sylhet	9403	11830	18	19	9421	11849
	Sylhet Div.	10087	12500	617	798	10704	13298
	Total	122026	186570	8462	14263	130488	200833

Sector	Area (Ha)	Production (MT)	MT/Ha	%
Floodplain/Paddy field	122026	186570	1.529	92.90
Boropit	8462	14263	1.686	7.10
Total	130488	200833	1.539	100.00

**Table 20. Species Composition of Fish Production of Seasonal cultured water body
2012-13**

Sl. No.	Species	Total Catch (MT)	(%)
1	Rui (<i>Labeo rohita</i>)	38185	19.01
2	Catla (<i>Catla catla</i>)	35059	17.46
3	Mrigal (<i>Cirrhinus cirrhosus</i>)	31897	15.88
4	Kalibaus (<i>Labeo calbasu</i>)	1901	0.95
5	Bata (<i>Labeo Bata</i>)	1041	0.52
6	Ghonia (<i>Labeo gonius</i>)	0	0.00
7	Silver Carp (<i>Hypophthalmichthys molitrix</i>)	51728	25.76
8	Grass Carp (<i>Ctenopharyngodon idella</i>)	1701	0.85
9	Common Carp (<i>Cyprinus carpio</i>)	13347	6.64
10	Other Exotic Carp	0	0.00
11	Pangas (<i>Pangasius pangasius</i>)	0	0.00
12	Boal/Air/Guizza Air (<i>Wallago attu/ Sperata aor / Sperata seenghala</i>)	0	0.00
13	Shol/Gazar/Taki (<i>Channa striatus/C. marulius/C. punctatus</i>)	600	0.30
14	Koi (<i>Anabas testudineus</i>)	80	0.04
15	Singi/Magur (<i>Heteropneustes fossilis/Clarias batrachus</i>)	360	0.18
16	Big Prawn	0	0.00
17	Small Prawn	2561	1.27
18	Tilapia/Nilotica (<i>Oreochromis mossambicus/O. niloticus</i>)	5643	2.81
19	Sarpunti (<i>Puntius sarana</i>)	9365	4.66
20	Other Fish	7365	3.67
	TOTAL	200833	100.00

**Table 21. Annual Fish Production of Baor
2012-13**

District	Total	
	Area (Ha)	Production (MT)
Faridpur	355	332
Gopalganj	110	183
Madaripur	200	165
Rajbari	300	372
Dhaka Division	965	1052
Chuadanga	686	986
Jessore	1127	1697
Jhenaidah	807	595
Khulna	225	159
Kushtia	372	511
Magura	510	502
Meherpur	400	335
Narail	290	227
Satkhira	106	82
Khulna Division	4523	5094
TOTAL	5488	6146
	<i>Unit Production</i>	<i>1.120 MT/Ha</i>

Note-1 : Area of Baor from SPARRSO Report -1983, CEGIS Report -2004 and Baor Fish Development Project.

**Table 22. Species Composition of Fish Production of Baor
2012-13**

SL. No.	Species	Total	
		MT	%
1	Rui	1162	18.91
2	Catla	628	10.22
3	Mrigal	771	12.54
4	Kalibaus	6	0.10
5	Bata	0	0.00
6	Gonia	0	0.00
7	Silver carp	894	14.55
8	Grass carp	230	3.74
9	Mirror/Common carp	457	7.44
10	Other Exotic carp	152	2.47
11	Pangas	0	0.00
12	Boal/Air	98	1.59
13	Shol/Gazar/Taki	311	5.06
14	Koi	20	0.33
15	Shingi/Magur	78	1.27
16	Big Shrimp/Prawn	14	0.23
17	Small Shrimp/Prawn	310	5.04
18	Tilapia/Nilotica	131	2.13
19	Sarpunti/Thai punti	22	0.36
20	Other Inland Fish	862	14.02
	TOTAL	6146	100.00

**Table 23. Annual Production of Shrimp/Prawn Farm
2012-13**

District	Area (Ha)			Shrimp/ Prawn Production (MT)				Fish Production (MT)	Total Production (MT)
	Bagda	Golda	Total	Bagda	Golda	Other shrimp/prawn	Total shrimp/prawn		
Dhaka	0.00	0.76	0.76	0.00	0.65	0.00	0.65	0.15	0.80
Faridpur									
Gazipur	0.00	4.00	4.00	0.00	1.25	0.00	1.25	1.70	2.95
Gopalganj	0.00	1300.24	1300.24	0.00	447.00	1.5	448.50	598.52	1047.02
Jamalpur									
Kishorgonj									
Madaripur	0.00	97.00	97.00	0.00	42.20	0.70	42.90	53.80	96.70
Manikgonj	0.00	2.81	2.81	0.00	1.55	0.02	1.57	0.51	2.08
Munsigonj	0.00	3.26	3.26	0.00	0.73	0.46	1.19	1.96	3.15
Mymensingh									
Narayangonj	0.00	2.93	2.93	0.00	0.73	0.00	0.73	2.10	2.83
Narsingdi									
Netrokona	0.00	0.74	0.74	0.00	0.32	0.00	0.32	0.52	0.84
Rajbari	.000	0.20	0.20	.000	0.05	0.00	0.05	0.11	0.16
Shariatpur	0.00	19.82	19.82	0.00	5.04	0.00	5.04	17.52	22.56
Sherpur									
Tangail	0.00	10.84	10.84	0.00	1.96	0.00	1.96	11.42	13.38
Dhaka Div.	0.00	1442.60	1442.60	0.00	501.48	2.68	504.16	688.31	1192.47
Bagerhat	51799.00	20893.94	72692.94	16748.00	16112.95	6100.70	38961.65	17834.85	56796.50
Chuadanga	0.00	0.27	0.27	0.00	0.07	0.00	0.07	0.08	0.15
Jessore	922.00	14363.00	15285.00	293.00	6961.80	3122.00	10376.80	6900.00	17276.80
Jhenaidhah	0.00	1.60	1.60	0.00	0.90	0.00	0.90	0.15	1.05
Khulna	37035.00	15604.07	52639.07	12490.00	11833.77	1814.52	26138.29	13968.78	40107.07
Kushtia									
Magura	0.00	17.54	17.54	0.00	8.63	0.00	8.63	5.33	13.96
Meherpur									
Narail	0.00	2311.00	2311.00	0.00	1064.00	0.00	1064.00	647.00	1711.00
Satkhira	66769.00	6190.00	72959.00	23375.00	4650.42	9119.85	37145.27	21998.00	59143.27
Khulna Div.	156525.00	59381.42	215906.42	52906.00	40632.54	20157.07	113695.61	61354.19	175049.80
Barguna	57.00	152.75	209.75	21.00	22.28	4.00	47.28	35.55	82.83
Barisal	0.00	665.20	665.20	0.00	389.90	143.60	533.50	223.00	756.50
Bhola	17.00	8.46	25.46	7.18	5.12	0.26	12.56	6.15	18.71
Jhalokathi	0.00	11.00	11.00	0.00	5.35	0.35	5.70	3.42	9.12
Patuakhali	7009.00	731.32	7740.32	2523.45	466.65	210.30	3200.40	1829.85	5030.25
Pirojpur	259.00	1555.00	1814.00	90.37	1194.76	66.70	1351.83	327.08	1678.91
Barisal Div.	7342.00	3123.73	10465.73	2642.00	2084.06	425.21	5151.27	2425.05	7576.32

District	Area			Shrimp/ Prawn Production				Fish Production	Total Production
	Bagda	Golda	Total	Bagda	Galda	Other shrimp/prawn	Total shrimp/prawn		
Dinajpur	0.00	0.23	0.23	0.00	0.05	0.00	0.05	0.15	0.20
Gaibandha	0.00	1.19	1.19	0.00	0.51	0.02	0.53	0.20	0.73
Kurigram									
Lalmonirhat	0.00	1.22	1.22	0.00	0.45	0.03	0.48	0.24	0.72
Nilphamari	0.00	0.36	0.36	0.00	0.10	0.00	0.10	0.18	0.28
Panchagarh	0.00	6.25	6.25	0.00	2.38	0.12	2.50	1.42	3.92
Rangpur	0.00	0.30	0.30	0.00	0.07	0.00	0.07	0.12	0.19
Thakurgaon	0.00	4.50	4.50	0.00	1.85	0.11	1.96	1.20	3.16
Rang. Div.	0.00	14.05	14.05	0.00	5.41	0.28	5.69	3.51	9.20
Bogra									
C.Nawabgonj									
Joypurhat	0.00	2.40	2.40	0.00	0.58	0.03	0.61	1.20	1.81
Naogaon	0.00	6.45	6.45	0.00	3.17	0.05	3.22	2.40	5.62
Natore									
Pabna	0.00	1.49	1.49	0.00	0.54	0.01	0.55	0.60	1.15
Rajshahi	0.00	0.53	0.53	0.00	0.15	0.00	0.15	0.17	0.32
Sirajganj	0.00	1.23	1.23	0.00	0.44	0.01	0.45	0.57	1.02
Raj. Div.	0.00	12.10	12.10	0.00	4.88	0.10	4.98	4.94	9.92
Bandarban	4.00	1.00	5.00	2.00	0.40	0.03	2.43	1.44	3.87
B.Barua									
Chandpur	0.00	103.36	103.36	0.00	22.42	22.11	44.53	25.72	70.25
Chittagong	2805.00	468.72	3273.72	838.00	218.24	30.87	1087.11	1373.75	2460.86
Comilla	0.00	62.40	62.40	0.00	23.14	1.55	24.69	16.02	40.71
Cox's Bazar	43377.00	330.20	43707.20	12560.00	122.94	516.50	13199.44	6330.72	19530.16
Feni	0.00	42.50	42.50	0.00	12.62	0.60	13.22	12.35	25.57
Khagrachari									
Lakshmipur	0.00	68.10	68.10	0.00	30.00	0.00	30.00	15.00	45.00
Noakhali	0.00	167.95	167.95	0.00	53.50	0.00	53.50	165.25	218.75
Rangamati									
Ctg. Div.	46186.00	1244.23	47430.23	13400.00	483.26	571.66	14454.92	7940.25	22395.17
Habiganj									
Moulvibazar	0.00	1.50	1.50	0.00	0.51	0.04	0.55	0.45	1.00
Sunamgonj	0.00	0.66	0.66	0.00	0.29	0.01	0.30	0.14	0.44
Sylhet	0.00	0.71	0.71	0.00	0.50	0.02	0.52	0.16	0.68
Sylhet Div.	0.00	2.87	2.87	0.00	1.30	0.07	1.37	0.75	2.12
Total	210053.00	65221.00	275274.00	68948.00	43712.93	21157.07	133818.00	72417.00	206235.00
%	76.31	23.69	100.00	33.43	21.20	10.26	64.89	35.11	100.00
Unit Production (MT/Ha)				0.328	0.670	0.077	0.486	0.263	0.749

Item	Area (Ha)	Pro. (MT)	Kg/Ha	%
Shrimp/Prawn Production		133818	486	64.89
Fish Production		72417	263	35.11
Total	275274	206235	749	100.00

Source : Report from Deputy Director, Shrimp, Dhaka and District Fisheries Office.

Note : 1) Unit Production for other shrimp/prawn and fish total area is considered.
2) Other Shrimp/Prawn: Harina, Chaka and other small shrimp/prawn.

**Table 24. Species Composition of Shrimp/Prawn Farm Production
2012-13**

[Unit : Metric Ton]

Sl. No.	Species	Division							Total	%
		Dhaka	Khulna	Barisal	Rangpur	Rajshahi	Ctg.	Sylhet		
1	Golda	500.83	40633.19	2084.06	5.41	4.88	483.26	1.30	43712.93	21.20
2	Bagda	0.00	52906.00	2642.00	0.00	0.00	13400.00	0.00	68948.00	33.43
3	Harina	0.00	6934.40	277.82	0.00	0.00	321.00	0.00	7533.22	3.65
4	Chaka	0.00	2502.00	89.30	0.00	0.00	108.00	0.00	2699.30	1.31
5	Other Shrimp/Prawn	2.68	10720.67	58.09	0.28	0.10	142.66	0.07	10924.55	5.30
	Shrimp/Prawn Total	503.51	113696.26	5151.27	5.69	4.98	14454.92	1.37	133818.00	64.89
6	Rui	147.00	10535.00	242.00	1.60	1.90	790.00	0.50	11718.00	5.68
7	Catla	65.00	4500.00	170.00	1.40	1.20	540.00	0.20	5277.80	2.56
8	Mrigal	34.00	1830.00	97.00	0.21	0.90	325.00	0.05	2287.16	1.11
9	Kalibaus	6.00	650.00	0.00	0.00	0.00	0.00	0.00	656.00	0.32
10	Bata	34.00	3220.00	0.00	0.00	0.00	0.00	0.00	3254.00	1.58
11	Ghonia								0.00	0.00
12	Silver Carp	123.00	6614.00	180.00	0.00	0.00	622.00	0.00	7539.00	3.65
13	Grass Carp	3.00	24.00	4.00	0.00	0.00	29.00	0.00	60.00	0.03
14	Mirror/Common Carp	38.00	4862.00	165.00	0.00	0.00	476.00	0.00	5541.00	2.69
15	Other Exotic Carp								0.00	0.00
16	Pangas								0.00	0.00
17	Boal/Air								0.00	0.00
18	Shol/ Gazar/Taki								0.00	0.00
19	Koi/								0.00	0.00
20	Sing/ Magur								0.00	0.00
21	Tilapia/Nilotica	75.00	15447.00	727.00	0.00	0.00	2382.00	0.00	18631.00	9.03
22	Thai Sharputi	52.00	3020.00	242.00	0.00	0.00	794.00	0.00	4108.00	1.99
23	Other Fish	111.16	10652.34	598.05	0.30	0.94	1982.25	0.00	13345.04	6.47
	Fish Total	688.16	61354.34	2425.05	3.51	4.94	7940.25	0.75	72417.00	35.11
	Grand Total	1191.67	175050.60	7576.32	9.20	9.92	22395.17	2.12	206235.00	100.00

*Note: Bagda (Penaeus monodon)
Golda (Macrobrachium rosenbergii)
Horina (Metapenaeus monoceros)
Chaka (Fenneropenaeus indicus)*

Table 25. Year-wise Area of Shrimp/Prawn Farm from 2003-04 to 2012-13

Division	Year-wise Area (Ha)									
	2003-04	2004-05	2005-06	2006-07	2007-08	2008-09	2009-10	2010-11	2011-12	2012-2013
Dhaka	242	242	242	242	242	242	1301	1515	1584	1443
Khulna	163848	171506	171506	171506	171506	171506	179420	202576	205346	215906
Barisal	9189	11425	11425	11425	11425	11425	4957	7128	8196	10466
Rangpur							25	49	52	14
Rajshahi							55	16	20	12
Chittagong	29792	34,704	34,704	34,704	34,704	34,704	60440	65200	60031	47430
Sylhet								8	3	3
Total	203071	217877	217877	217877	217877	217877	246198	276492	275232	275274

**Table 26. Annual Catch of Hilsa in Inland and Marine Fisheries
2012-13**

[Unit : Metric Ton]

District	Principal River							Other River	Sundarbans	Inland Total	Marine Total	Country Total
	Lower Meghna	Upper Meghna	Lower Padma	Upper Padma	Jamuna	Brahma Putra	Total					
Dhaka			70				70			70	0	70
Faridpur			231				231			231	0	231
Gazipur							0			0	0	0
Gopalganj							0	1		1	0	1
Jamalpur					1		1			1	0	1
Kishoregonj		66					66			66	0	66
Madaripur			45				45			45	0	45
Manikgonj			721		3		724			724	0	724
Munshigonj		24	45				69			69	0	69
Mymensingh							0			0	0	0
Narayanganj		112					112			112	0	112
Narsingdi		48					48			48	0	48
Netrakona							0			0	0	0
Rajbari			460	307			767			767	0	767
Sariatpur	111		74				185			185	0	185
Sherpur							0			0	0	0
Tangail					5		5			5	0	5
Dhaka Div.	111	250	1646	307	9	0	2323	1	0	2324	0	2324
Bagerhat							0	361	128	489	785	1274
Chuadanga							0			0	0	0
Jessore							0			0	0	0
Jhenaidah							0			0	0	0
Khulna							0	11		11	0	11
Kushtia				17			17			17	0	17
Magura							0			0	0	0
Meherpur							0			0	0	0
Narail							0	13		13	0	13
Satkhira							0	0		0	0	0
Khulna Div.	0	0	0	17	0	0	17	385	128	530	785	1315
Barguna							0	807		807	50819	51626
Barisal	21431						21431			21431	1380	22811
Bhola	27816						27816			27816	50627	78443
Jhalokathi							0	361		361	0	361
Patuakhali							0	3231		3231	9310	12541
Pirojpur							0	1194		1194	0	1194
Barisal Div.	49247	0	0	0	0	0	49247	5593	0	54840	112136	166976

[Unit : Metric Ton]

District	Principal River							Other River	Sundarbans	Inland Total	Marine Total	Country Total
	Lower Meghna	Upper Meghna	Lower Padma	Upper Padma	Jamuna	Brahmaputra	Total					
Dinajpur							0			0	0	0
Gaibandha					12		12			12	0	12
Kurigram						7	7			7	0	7
Lalmonirhat							0			0	0	0
Nilphamari							0			0	0	0
Panchagarh							0			0	0	0
Rangpur							0			0	0	0
Thakurgaon							0			0	0	0
Rang. Div.	0	0	0	0	12	7	19	0	0	19	0	19
Bogra					2		2	0		2	0	2
C.Nawabganj				2			2	0		2	0	2
Joypurhat							0	0		0	0	0
Naogaon							0	0		0	0	0
Natore				0			0	1		1	0	1
Pabna				32	3		35	0		35	0	35
Rajshahi				5			5	0		5	0	5
Sirajgonj					4		4	0		4	0	4
Raj. Div.	0	0	0	39	9	0	48	1	0	49	0	49
Bandarban							0	0		0	0	0
B. baria		158					158	0		158	0	158
Chandpur	3033						3033	0		3033	0	3033
Chittagong							0	12439		12439	128930	141369
Comilla		0					0	0		0	0	0
Cox's Bazar							0	4228		4228	4339	8567
Feni							0	80		80	275	355
Khagrachari							0	0		0	0	0
Laksmipur	3018						3018	0		3018	0	3018
Noakhali	17907						17907	0		17907	6110	24017
Rangamati							0	0		0	0	0
Ctg. Div.	23958	158	0	0	0	0	24116	16747	0	40863	139654	180517
Habigonj		6					6			6	0	6
Moulvibazar							0			0	0	0
Sunamgonj							0	6		6	0	6
Sylhet							0	11		11	0	11
Sylhet Div.	0	6	0	0	0	0	6	17	0	23	0	23
Total	73316	414	1646	363	30	7	75776	22744	128	98648	252575	351223
%	20.87	0.12	0.47	0.10	0.01	0.00	21.57	6.48	0.04	28.09	71.91	100.00

Sector	Hilsa Production (MT)	%
Principal River	75776	21.57
Other River	22744	6.48
Sundarbans	128	0.04
Marine Industrial	2205	0.63
Marine Artisanal	250370	71.28
Total	351223	100.00

**Table 27. Annual Catch of Marine Fisheries
2012-13**

Type of Fishing	Number of Craft (Trawler/Boat)	Number of Unit (Gear/Net)	Catch in Metric Ton			
			Shrimp	Hilsa	Other Fish	Total
A. Industrial						
Trawl Fishing						
a) Shrimp Trawler	32	-	2834	0	1953	4787
b) Fish Trawler	152	-	249	2205	65789	68243
TOTAL INDUSTRIAL	184		3083	2205	67742	73030
B. Artisanal						
1. Gill Net Fishing						
a) Mechanized	19223	96115	0	203500	82540	286040
b) Non Mechanized	6861	35211	0	46870	18000	64870
SUB-TOTAL	26084	131326	0	250370	100540	350910
2. Set Bag Net Fishing						
a) Seasonal (MB)	1151	2620	18010	0	40325	58335
b) Seasonal (NMB)	4688	19179	7565	0	58200	65765
c) All Seasonal (NMB)	7255	31025	8285	0	4000	12285
SUB-TOTAL	13094	52824	33860	0	102525	136385
3. Long Line Fishing						
a) Jew Fish Long Line						
Mechanized	1352	13965	0	0	11463	11463
Non Mechanized	351	1801	0	0	1015	1015
b) Other Long Line (NMB)	1121	9772	0	0	560	560
SUB-TOTAL	2824	25538	0	0	13038	13038
4. Trammel Net Fishing (NMB)						
	1123	7122	7225	0	2500	9725
5. Other Gears Fishing (NMB)						
	2564	25640	2400	0	3500	5900
TOTAL ARTISANAL	45689	242450	43485	250370	222103	515958
GRAND TOTAL (A+B)			46568	252575	289845	588988

Trawler		Boat		Gear	
Type	No.	Type	No.	Type	No.
Shrimp Trawler	32	MB (Mechanized Boat)	21726	Gill Net	131326
Fish Trawler	152	NMB (Non-Mechanized Boat)	23963	Set Bag Net	52824
				Long Line	25538
				Trammel Net	7122
				Other Gear	25640
Total	184		45689		242450

**Table 28. Species-wise Catch of Marine Fisheries
2012-13**

[Unit : Metric Ton]

Type of Fishing	Species										
	Hilsa	Sardine	Bombay Duck	Indian Salmon	Pom fret	Jew Fish	Cat Fish	Shark/ Skate/ Ray	Other Marine Fish	Shrimp	Total
A. Industrial											
Trawl Fishing	2205	20906	0	0	428	2818	2122	546	40922	3083	73030
B. Artisanal											
1. Gill Net Fishing											
a) Mechanized	203500	8030	10185	2350	12050	16126	895	1885	31019	0	286040
b) Non-mechanized	46870	0	0	0	0	3826	310	0	13864	0	64870
SUB-TOTAL	250370	8030	10185	2350	12050	19952	1205	1885	44883	0	350910
2. Set Bag Net Fishing											
a) Seasonal	0	700	60230	0	17215	1216	185	250	18729	25575	124100
b) All Seasonal	0	0	500	0	0	0	300	180	3020	8235	12285
SUB-TOTAL	0	700	60730	0	17215	1216	485	430	21749	33860	136385
3. Long Line Fishing											
a) Jew Fish Long Line											
Mechanized	0	0	0	75	0	3385	3180	1738	3085	0	11463
Non Mechanized	0	0	0	20	0	650	100	65	180	0	1015
b) Other Long Line (NMB)	0	0	0	0	0	240	92	228	0	0	560
SUB-TOTAL	0	0	0	95	0	4275	3372	2031	3265	0	13038
4. Trammel Net Fishing (NMB)	0	0	0	0	0	1321	885	125	169	7225	9725
5. Other Gears' Fishing (NMB)	0	0	830	0	0	1018	525	0	1127	2400	5900
TOTAL ARTISANAL	250370	8730	71745	2445	29265	27782	6472	4471	71193	43485	515958
GRAND TOTAL (Industrial+ Artisanal)	252575	29636	71745	2445	29693	30600	8594	5017	112115	46568	588988
%	42.88	5.03	12.18	0.42	5.04	5.20	1.46	0.85	19.03	7.91	100.00

Species-wise Shrimp Catch in Marine Fisheries

Sector	Bagda (Tiger)	Harina (Brown)	Chaka (White)	Others	Total
Trawl Fishing	170	2104	103	706	3083
Artisanal Fishing	3295	30812	3440	5938	43485
Total	3465	32916	3543	6644	46568

**Table 29. Annual Carp Hatchling Production
2013**

Source of Production	No. of Hatchery	Hatchling Production (Kg)	%
1. Natural :			
Jamuna River		1228	
Padma River		1148	
Arialkha River		60	
Brahmaputra River		49	
Garai/Madhumati River		215	
Halda River		626	
Natural Total		3326	0.68
2. Artificial			
Govt. Hatchery	84	9890	2.01
Private Hatchery	852	477608	97.31
Artificial Total	936	487498	99.32
COUNTRY TOTAL	936	490824	100.00

Note: Hatchling of 4-5 days old.

**Table 30. Annual PL (Post Larva) Production
2013**

Source of Production	Galda Hatchery		Bagda Hatchery		Total	
	No. of Hatchery	PL Production (Core)	No. of Hatchery	PL Production (Core)	No. of Hatchery	PL Production (Core)
Govt. Hatchery	5	0.10	0	0.00	5	0.10
Private Hatchery	18	3.21	60	923.92	78	927.13
TOTAL	23	3.31	60	923.92	83	927.23

Note: No. of Hatchery mentioned which is under operation only.

**Table 31. Hatchling Production of Govt. Hatchery
2013**

	No. of Hatchery	Hatchling Production (Kg)								Total
		Major Carp	Exotic Carp	Pangas	Thai Puntl	Bata	Koi	Shingi/Magur	Other	
Fish Seed Multiplication Farm										
1. Dhaka Division	18	1216	309	0	105	75	5	3	0	1713
2. Khulna Division	7	536	30	0	50	75	0	0	0	691
3. Barisal Division	9	290	15	36	5	20	0	5	0	371
4. Rangpur Division	12	267	188	0	46	79	0	0	0	580
5. Rajshahi Division	14	1055	683	69	46	289	0	0	0	2142
6. Chittagong Division	11	534	80	20	31	7	0	0	0	672
7. Sylhet Division	6	472	39	0	111	0	0	0	0	622
Sub Total	77	4370	1344	125	394	545	5	8	0	6791
Other Govt. Hatchery										
Central Hatchery Complex, Baor Fish Development Project, Jhenaidah.	1	300	775	0	10	15	0	0	0	1100
2. Raipur Fish Hatchery and Training Centre, Lakshmipur.	1	500	66	1	65	10	0	0	0	642
3. Hatchery of Bangladesh Fisheries Research Institute, Mymensingh.	1	170	80	0	50	0	0	0	0	300
4. Hatchery of Riverine Station, Bangladesh Fisheries Research Institute, Chandpur.	1	22	0	0	0	0	0	0	0	22
5. Parbatipur Hatchery, Dinajpur.	1	190	255	0	35	25	0	0	0	505
6. Faridpur Training and Extension Centre, Faridpur.	1	40	0	0	0	0	0	0	0	40
7. Hatchery of Rural Development Academy (RDA), Bogra.	1	170	140		50	130				490
Sub Total	7	1392	1316	1	210	180	0	0	0	3099
TOTAL	84	5762	2660	126	604	725	5	8	0	9890

**Table 32. Hatchling Production of Private Hatchery
2013**

Division	No. of Hatchery	Hatchling Production (Kg)								Total	Tilapia Juvenile (Lakh)
		Major Carp	Exotic Carp	Pangas	Thai Puntl	Bata	Koi	Shingi/Magur	Other		
Dhaka	196	69245	32894	2275	5764	5194	3132	1939	336	120779	5433
Khulna	90	40084	24577	2633	2180	2138	400	315	10	72337	3343
Barisal	38	11788	6844	102	1398	410	0	0	0	20542	333
Rangpur	76	15679	16274	0	3053	4280	2	119	0	39407	94
Rajshahi	198	42381	36488	50972	4662	9266	7455	2880	25	154129	1986
Chittagong	236	26751	7698	13770	9418	2007	265	88	0	59997	4091
Sylhet	18	5573	2870	55	1834	25	10	50	0	10417	34
TOTAL	852	211501	127645	69807	28309	23320	11264	5391	371	477563	15314

*Note : About four lakh hatchlings contain in one kg spawn and one Kg contains 1000-1200 Tilapia Juvenile.
Other Species: Chitol, Gulsa, Pabda etc.*

**Table 33. Annual Carp Spawn/Fertilized Egg Collected from Natural Source
2013**

District	Upazila	Collection Centre	Name of River	No. of Saver	No. of People engaged	No. of Net used	No. of Boat used	Collection Period	Frequency of Spawning Time	Spawn/Fertilized Egg Collected (kg)	Sale Rate Tk/kg
1	2	3	4	5	6	7	8	9	10	11	12
Sirajganj	Sirajganj Sadar	Vatpiaree, Puthiaburi, Char Malsapara	Jamuna	34	40	138	6	May to July	12	153	1840
Sirajganj	Shahjadpur	Sonatali Belotia	Jamuna	10	20	30	10	June to July	3	25	3000
Sirajganj	Chauhali	Khashpukuria	Jamuna	20	50	200	20	June to July	30	700	1500
Sirajganj	Belkuchi	Khiramaria, Delua, Thakurpara, Jangalia	Jamuna	10	50	30	20	May to July	2	150	1800
Sirajganj	Kazirpur	Decoria, Magai	Jamuna	8	17	145	8	June to July	4	200	1500
Jamuna Total				82	177	543	64			1228	
Rajshahi	Ghudaighari	Alipur, Chakpara, Kharjagati	Padma	12	60	300	12	June to August	1	360	1440
Rajshahi	Poba	Bulanpur	Padma	29	69	181	17	June to August	1	317	750
Rajshahi	Charvat	Tangon, Shahapur	Padma, Baral	9	69	24	14	June to August	1	215	1540
Rajshahi	Bagha	Sharehat	Padma	2	4	2	2	June, July	1	6	3000
Faridpur	Faridpur Sadar	C&B Ghat	Padma	11	44	165	11	May to July	9	250	2500
Padma Total				63	246	672	56			1148	
Faridpur	Sadarpur	Karalcandi	Arial Kha	3	9	32	3	May to July	20	60	1800
Arialkha Total				3	9	32	3			60	
Gaibandha	Shagatta	Munshirhat	Brahmaputra	1	5	10	1	June	1	14	2200
Gaibandha	Fulshari	3 rd Ghat, Rasulpur	Brahmaputra	2	8	30	2	June	1	35	
Brahmaputra Total				3	13	40	3			49	
Magura	Sripur	Kudla	Gharai	4	24	50	4	July, August	1	80	3000
Magura	Mohammadpur	Naderehad ghat, Dattidhah ghat, Babukhali	Modhumati	20	57	22	8	July, August	2	75	2500
Magura	Magura sadar	Kalinagar ghat, Ghaysh ghat	Modhumati	4	8	4	4	July, August	2	60	3000
Gharai, Modhumati Total				28	89	76	16			215	
Chittagong	Hathazari	Katakhalighona	Halda	1264	1264	632	632	May	2	365	30000
Chittagong	Rawzan	Khalifarghona, Ramdashat, Keraltalir Bak	Halda	836	836	418	418	May	2	261	30000
Halda Total				2100	2100	1050	1050			626	
Country Total				2279	2634	2413	1192			3326	

Note : Selling price of carp spawn of Halda River is high due to stain.

Table 34. Year-wise Annual Export of Fish and Fish Product 1999-00 to 2012-13

Quantity in Metric Ton

Value in Core Taka

1 US Dollar = 77.75 Taka

Year	Frozen Shrimp/ Prawn		Live Fish		Frozen Fish		Chilled Fish		Dry fish		Salted/ dehydrated fish		Crab/ Eal		Shark fin/ Fish Maws		Others		Total		% of Total Export (Value)
	Qty	Value	Qty	Value	Qty	Value	Qty	Value	Qty	Value	Qty	Value	Qty	Value	Qty	Value	Qty	Value	Qty	Value	
1999-00	28514	1612.2	-	-	9484	137.19	-	-	215	3.65	809	25.96	107	1.44	262	31.17	-	-	39391	1811.56	6.28
2000-01	29713	1885.2	-	-	7965	94.89	-	-	137	2.02	838	27.73	154	2.33	181	20.63	-	-	38988	2032.75	5.77
2001-02	30209	1447.8	-	-	9864	137.39	-	-	517	8.32	293	9.53	336	7.07	263	27.07	-	-	41482	1637.14	4.76
2002-03	36864	1719.9	-	-	8846	158.64	-	-	333	7.02	526	19.12	630	14.58	172	22.35	-	-	47371	1941.59	5.10
2003-04	42943	2152.8	-	-	10229	202.24	-	-	472	4.16	377	1.38	116	1.39	4	1.53	-	-	54141	2363.47	5.71
2004-05	46533	2281.6	-	-	15763	256.2	-	-	272	3.71	770	28.97	38	0.86	1	0.39	-	-	63377	2571.72	5.90
2005-06	49317	2698.4	57	0.48	17429	294.14	-	-	150	2.19	591	19.84	1,107	12.95	78	0.80	100	1.09	68829	3029.84	4.56
2006-07	53361	2992.3	4	0.07	18376	325.9	-	-	77	1.34	441	12.80	1,123	15.48	244	4.11	78	0.86	73704	3352.89	4.90
2007-08	49907	2863.9	10	0.15	23515	495.46	-	-	210	2.67	658	26.97	439	4.88	266	1.82	294	0.41	75299	3396.28	4.04
2008-09	50368	2744.1	0.3	0.006	19294	450.89	-	-	341	11.99	84	3.92	1217	11.98	276	1.77	1308	18.73	72888	3243.41	3.00
2009-10	51599	2885.2	1783	13.22	21464	458.11	-	-	622	25.06	0	0.00	692	10.41	955	12.66	528	3.85	77643	3408.52	2.74
2010-11	54891	3568.2	0.60	0.045	16743	490.00	16369	421.05	623	5.57	577	30.86	4485.2	54.11	0	0.00	2780	33.97	96469	4603.83	2.73
2011-12	48007	3640.2	0.46	0.04	15513	396.18	19026	520.74	986	9.43	411	27.46	5767	95.77	0	0.00	2758	14.14	92479	4703.94	2.46
2012-13	50333	3376.2	0	0	11435	316.36	11831	246.86	1278	36.03	0	0	7428	169.49	1	0.09	2599	13.93	84905	4158.97	2.01

Source: EPB (Export Promotion Bureau) and FIQC (Fish Inspection and Quality Control), Department of Fisheries.

Note: Chilled fish included in the column of frozen fish up to 2009-2010.

Exported Galda & Bagda in 2012-13

	(MT)	Core Taka	million US \$
Galda	6678.94	716.3	92.13
Bagda	37274.39	2359.94	303.52
Total	43953.33	3076.24	395.65

Exported Hilsa in 2012-13

	(MT)	Core Taka	million US \$
Frozen	90.36	4.21	0.54
Chilled	432.84	20.16	2.59
Total	523.20	24.37	3.13

Table 35. Sector-wise Annual Fish Production of 30 Years from 1983-84 to 2012-13

[Unit : Metric Ton]

Year	Capture					Culture					Marine			Total	Growth Rate (%)
	River	Sundar bans	Beel	Kaptai Lake	Floodplain	Pond	Baor	Seasonal Cultured W/B	Shrimp	Marine Industrial	Marine Artisanal				
1983-84	207766	7783	51373	4057	200616	107944	862		8219	14500	150382		753502		
1984-85	213057	6825	45893	2700	194130	111567	962		11282	12440	175123		773979	2.72	
1985-86	199600	7112	45258	2433	187396	123804	968		19951	11898	195503		793923	2.58	
1986-87	195117	6035	42077	3981	183796	142876	1174		22050	12356	205223		814685	2.62	
1987-88	183817	8066	45610	4068	182037	149423	1254		25248	10395	217187		827105	1.52	
1988-89	181140	6416	47019	3439	186126	155012	1321		27172	10353	222928		840926	1.67	
1989-90	173410	6393	46594	3713	193762	163730	1357		27505	11379	227684		855527	1.74	
1990-91	135355	6651	47923	4392	249083	181018	1544		28431	8760	232778		895935	4.72	
1991-92	124843	6297	49201	4216	295185	195034	1682		30147	9623	235851		952079	6.27	
1992-93	138746	6939	53019	4142	329573	202167	1803		33773	12227	238265		1020654	7.20	
1993-94	143425	7127	55592	6635	360597	222542	2201		39447	12454	240590		1090610	6.85	
1994-95	152782	6951	58298	5556	367558	267282	2460		47331	11715	252935		1172868	7.54	
1995-96	165637	7265	60768	6148	369333	307974	2764		68349	11959	257743		1257940	7.25	
1996-97	159660	9225	62798	5764	362453	403830	3014		79020	13564	261140		1360468	8.15	
1997-98	156894	7031	67812	5932	378280	483416	3378		88018	15273	257545		1463579	7.58	
1998-99	151309	11134	69850	6689	410436	499590	3536		90076	15818	293979		1552417	6.07	
1999-00	154335	11648	72825	6852	424805	561050	3622		92448	16304	317495		1661384	7.02	
2000-01	150129	12035	74527	7051	445178	615825	3801		93014	23901	355596		1781057	7.20	
2001-02	143592	12345	76101	7247	449150	685107	3892		97605	25165	390255		1890459	6.14	
2002-03	137848	13884	75460	7025	414823	752054	4098	60293	100804	27954	403954		1998197	5.70	
2003-04	137337	15242	74328	7238	437509	795810	4282	60413	114660	32606	422601		2102026	5.20	
2004-05	139798	15724	74925	7379	554762	756993	4388	66681	120710	34114	440483		2215957	5.42	
2005-06	137859	16423	76365	7548	690753	759628	4498	27738	127923	34084	445726		2328545	5.08	
2006-07	136958	17751	75137	8085	738673	811954	4698	30157	129160	35391	452047		2440011	4.79	
2007-08	136812	18151	77524	8248	786515	866049	4778	32931	134715	34159	463414		2563296	5.05	
2008-09	138160	18462	79200	8590	843671	912178	5038	35842	145585	35429	479215		2701370	5.39	
2009-10	141148	20437	79209	7336	781807	1140484	8727	46902	155866	34182	483100		2899198	7.32	
2010-11	144566	22451	81564	8980	797024	1219736	4864	51230	184939	41665	504668		3061687	5.60	
2011-12	145613	21610	85208	8537	696127	1392412	5186	132163	196306	73386	505234		3261782	6.54	
2012-13	147264	15945	87902	9017	701330	1446594	6146	200833	206235	73030	515958		3410254	4.55	

Note : From 2002-03 a part of Floodplain is converted into Seasonal cultured water body for modern aqua-culture system.

Table 36. Species-wise Annual Fish Production from 2003-04 to 2012-13

[Unit : Metric Ton]

Species/Group	2003-04	2004-05	2005-06	2006-07	2007-08	2008-09	2009-10	2010-11	2011-12	2012-13
Major Carp	475031	494213	509995	535492	547652	617761	692597	753572	777005	731662
Other Carp	8592	9298	9303	9821	9339	11155	64359	55021	60356	54130
Exotic Carp	243767	267862	257739	292961	333452	305938	376006	265375	299494	402490
Cat Fish	37037	39935	34104	58588	85869	117856	208972	221965	288887	360722
Snake Head	71583	70400	101309	102086	110460	122093	113989	117577	89351	53305
Live Fish	55274	47588	60292	58158	75286	77113	101368	94000	95063	102651
Other Inland fish	546264	583136	634829	643160	643876	646085	575620	710853	763668	835457
Hilsha	255839	275862	277123	279189	290000	298921	313753	339845	346512	351223
Shrimp/Prawn	174758	195690	211010	221131	223095	244972	186418	239460	252523	228769
Sardine									20187	29636
Bombay Duck	37699	37924	39331	36009	36980	58263	58464	60750	67817	71745
Indian Salmon	992	1074	1018	969	1040	7733	7733	4521	3030	2445
Pomfret	11389	12035	12023	13061	16728	46643	50245	40478	39537	29693
Jew Fish	31954	31730	32538	35214	33803	38414	35514	36639	37929	30600
Sea Cat Fish	20456	19037	18151	18131	20534	16515	16722	17193	19700	8594
Shark/ Skate / Ray	4946	4085	4448	4790	4767	3933	4794	4205	3865	5017
Other Marine Fish	126445	126088	125332	130651	130415	87975	92644	100233	101858	112115
Total	2102026	2215957	2328545	2440011	2563296	2701370	2899198	3061687	3261782	3410254

Table 37. Comparison of Annual Fish Production between 2011-12 and 2012-13

Sector of Fisheries	2011-12		2012-13		Production Increase (MT)	Rate of Increase (%)
	Total Catch (MT)	Kg/Ha	Total Catch (MT)	Kg/Ha		
A. Inland Fisheries						
(i) Inland Open Water (Capture)						
1. River and Estuary	145613	171	147264	172	1651	1.13
2. Sundarbans	21610	122	15945	90	-5665	-26.21
3. Beel	85208	746	87902	770	2694	3.16
4. Kaptai Lake	8537	124	9017	131	480	5.62
5. Flood Plain	696127	257	701330	260	5203	0.75
Capture Total	957095		961458		4363	0.46
(ii) Inland Closed Water (Culture)						
6. Pond	1342282	3615	1446594	3896	104312	7.77
7. Seasonal cultured water body	182293	1494	200833	1539	18540	10.17
8. Baor	5186	945	6146	1120	960	18.51
9. Shrimp/Prawn Farm	196306	713	206235	749	9929	5.06
Culture Total	1726067		1859808		133741	7.75
Inland Fisheries Total	2683162		2821266		138104	5.15
B. Marine Fisheries						
10. Industrial (Trawl)	73386		73030		-356	-0.49
11. Artisanal	505234		515958		10724	2.12
Marine Fisheries Total	578620		588988		10368	1.79
COUNTRY TOTAL	3261782		3410254		148472	4.55

Note : Production of Sundarbans is decreased due to restriction on fishing imposed by the Forest Department.

END

